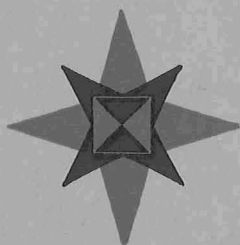


**AMERICAN FRIENDS**



**SERVICE  
COMMITTEE**

**1939**



*The Committee*

In order to enable the Society of Friends in America to continue to be of service at home and abroad, the following approved form of bequest may be used when writing a will:

“I give and bequeath to the American Friends Service Committee, Inc., with headquarters at 20 South 12th Street, Philadelphia, Pa., the sum of \$. . . . ., the principal and interest of said sum to be used at the discretion and by the direction of the American Friends Service Committee, Inc.”

Checks for the support of the work should be made payable to:

WILLIAM R. FOGG, *Treasurer*  
20 South 12th Street, Philadelphia, Pa.

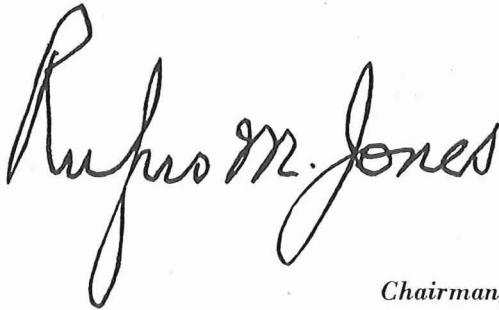
# ANNUAL REPORT . . . 1939

---

**I**N ONE of H. G. Wells' stories the hero of it has to spend a night in a house reputed to be haunted. When he entered the spooky house he found to his joy a row of candles burning, but he soon discovered that they were of different lengths and began to wink out one after the other, until finally the last one burned out and left him in the dark in his mysterious house!

Our world this last year has seemed something like that. It has been crowded with mysteries enough and we have watched light after light go out.

But love still "lasts on" and it remains "the greatest thing in the world." The way of love is also the way of faith and hope, and it will in the end prove to be the way of peace. The story which this Annual Report tells is a story of love in action and it will, I believe, bring courage to those who read it, and it may make the reader want to help to light the lights of love in the dark house.



*Chairman,*  
American Friends Service Committee.

---

*AMERICAN FRIENDS SERVICE COMMITTEE*  
*20 South Twelfth Street*  
*Philadelphia, Pa.*

# AMERICAN FRIENDS SERVICE COMMITTEE

## OFFICERS 1939-40

### *Chairman*

RUFUS M. JONES

### *Vice-Chairmen*

HANNAH CLOTHIER HULL                      HAROLD EVANS  
SUMNER A. MILLS

### *Treasurer*

WILLIAM R. FOGG

### *Executive Secretary*

CLARENCE E. PICKETT

## BOARD OF DIRECTORS

### *The Officers*

HAROLD EVANS  
WILLIAM R. FOGG  
HANNAH CLOTHIER HULL  
RUFUS M. JONES  
SUMNER A. MILLS  
CLARENCE E. PICKETT

### *Chairmen of Standing Committees*

BERNARD G. WARING,  
Social-Industrial Section  
WILLIAM EVES, 3RD,  
Foreign Service Section  
EMILY COOPER JOHNSON,  
Peace Section

### *Associate Secretaries*

\*EDWARD W. EVANS  
\*J. BARNARD WALTON  
\*WALTER C. WOODWARD

### *and the following*

WILLIAM C. BIDDLE  
HENRY J. CADBURY  
ANNA GRISCOM ELKINTON  
JOHN S. C. HARVEY  
LUCY BIDDLE LEWIS  
DOUGLAS V. STEERE  
C. MARSHALL TAYLOR  
\*ANNA COX BRINTON  
\*C. REED CARY  
\*J. PASSMORE ELKINTON  
\*HANN S. GRAMM  
\*ELIZABETH L. HAZARD  
\*ELEANOR STABLER CLARKE  
\*THOMAS R. KELLY  
\*FLORENCE MURPHY

*\*Indicates Co-opted Members*

## ADMINISTRATIVE STAFF 1939-40

### *Executive Secretary*

CLARENCE E. PICKETT

### *Associate Secretary*

ELEANOR SLATER

### *Social-Industrial Section*

HOMER L. MORRIS, Secretary  
ANNA NAOMI BINFORD,  
Personnel Secretary  
ELMORE JACKSON,  
Camp Secretary

### *Foreign Service Section*

MARY HOXIE JONES,  
Associate Secretary

### *Refugee Section*

MARY M. ROGERS }  
JOHN F. RICH        } Co-directors  
MARJORIE SCHAUFFLER,  
Associate Secretary  
EVELYN DAETSCH,  
Associate Secretary  
GABRIELLE DERENBERG,  
Associate Secretary  
RUTH V. POPE,  
Associate Secretary  
ANNELISE THIEMAN  
Associate Secretary

### *Office Secretary*

BLANCHE CLOEREN

NATALIE KIMBER,

Associate Secretary

HERTHA KRAUS }  
C. REED CARY    } Consultants

### *Peace Section*

RAY NEWTON, Secretary  
E. RAYMOND WILSON,  
Associate Secretary  
HAROLD CHANCE,  
Associate Secretary  
GUY W. SOLT,  
Associate Secretary  
\*CHARLOTTE SALMON,  
Associate Secretary  
E. A. SCHAAL,  
Associate Secretary

### *Fellowship Council*

LESLIE SHAFFER, Secretary

### *Finance*

HUGH W. MOORE, Secretary

### *Committees on Spain and Poland*

JOHN F. RICH, Secretary

*\* Loaned by the Peace Section to the Refugee Section for the year 1939.*

## THE SOCIAL-INDUSTRIAL SECTION

NOT all casualties are war casualties and not all those in need of rehabilitation are refugees from Europe. Some come from our own hills, farms, and cities, caught in inescapable poverty, trying to find some answer to their economic and social miseries. The Social-Industrial Section is concerned with such as these. It is significant that such efforts have not been lessened with the outbreak of war, that they have, in fact, been expanded to include, if ways and means can be found, a new project in social reconstruction. This is in accord with the conviction that there are many kinds of strife, each needing the reconciling power of understanding and good-will, and that one of the ways of making a contribution toward a better world order is to try to bring democracy a little more into being in some crowded corner of American life.

The Social-Industrial Section can not work on a large scale. Limitations of both personnel and money dictate modest ventures. But it has tried to give these ventures a significance of their own by experimenting in terms of patterns which might be copied elsewhere—a pattern for miners, a pattern for sharecroppers, a pattern for youth, restless with the urge to make and re-make.

### A Pattern for Miners

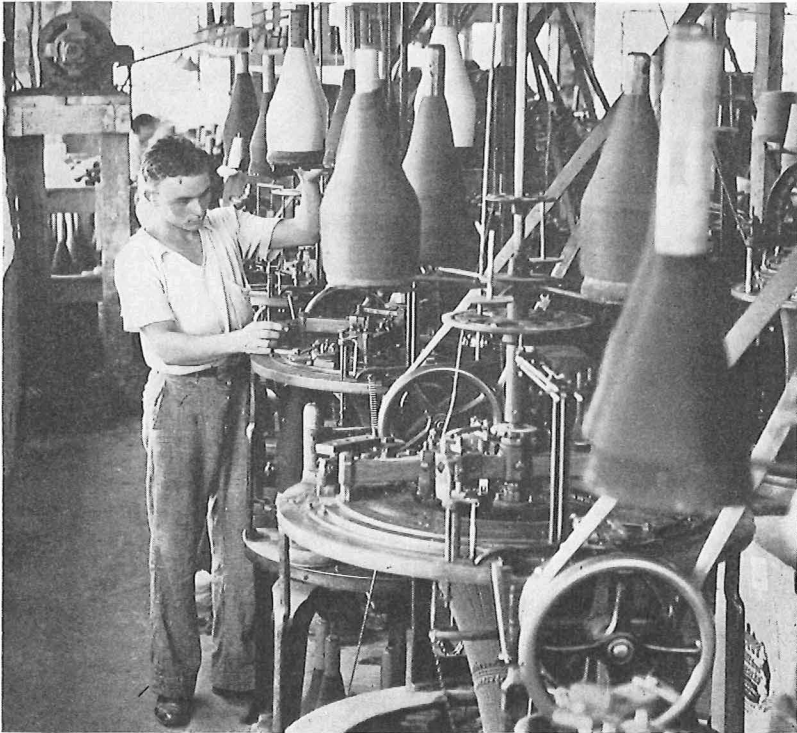
Previous Annual Reports of the American Friends Service Committee have traced the development of the new community of Penn-Craft, where fifty unemployed or partially employed coal-miners and their families are seeking some measure of economic security in the midst of the baffling problems of depleting coal reserves and mine mechanization with its technological unemployment. There is more to see at Penn-Craft at the end of 1939 than at its beginning. Driving south from Pittsburgh in the coal country of Fayette County, one comes on a development that is in curious contrast to the squalor of surrounding mining camps. Houses rise

in stone and timber from an amphitheatre of land. Gardens spring into corn; a knitting mill is turning out sweaters with homestead labor to add to irregular mine or relief incomes.

What is the record of progress in the last year? There is tangible progress. Ten houses are entirely finished, five of them occupied, and forty-five of the projected fifty families are now in residence. For those who have not seen a previous account of the project, it might be said that the houses are built cooperatively, by the men trading their labor, at a cost of \$2000, to be amortized over a 20 year period. The factory, built by the homesteaders, each donating 100 hours of labor, went into operation in the spring, and produces approximately one hundred and twenty-five dozen sweaters a week when running at full capacity, employing thirty people in two shifts of fifteen each. Gardens are larger and more productive. A farm, "the Taylor Farm," has been added to the 200 acres of the project and is being brought under cultivation. The cooperative store, started in 1937 with 3 members and a capital of \$15, is now doing a business of \$1100 to \$1500 a month.

But there are intangible gains, too. The Community Association runs more smoothly, the Store not only has more trade, but also a larger paid membership, and the Community has asked to supply its own leadership for its recreational programs for young people. A very miscellaneous group of people is being slowly, but visibly, welded into a community. There are problems, but in trying to work them out the Community is gaining a very real education in democratic living.

The older generation still clings to the mine pattern, and the war in Europe has increased available employment. But perhaps one of the most hopeful gains of the year has been the extent to which some of the sons of these miners have been breaking over into another pattern, there in the community, against the prevailing trend that leads so many rural boys to city streets. The knitting mill has absorbed some. One chose to move onto the Taylor Farm and tend it. One spent the summer at the Penland Weaving Institute in North Carolina and has come back to start hand weaving in the little weaving shop behind the Community House. One has thrown in his lot with the Cooperative Store after a course at the Rochdale Institute in New York. This is no mass movement—just a boy here and there, finding a new outlet. But such instances give one faith in the Penn-Craft pattern. It can and does make over life into a new design.



The knitting mill at Penn-Craft has given a new industry to displaced coal-miners

## A Pattern for Sharecroppers

Many of the activities of the Service Committee have started as the concern of some one or two individuals. Just so, the desire to find a new pattern for sharecroppers has been growing for several years in the minds of two concerned Friends, Mildred and Wilmer Young. After three years at the Delta Cooperative Farm at Rochdale, Mississippi, getting acquainted with the problem, they feel concerned to launch out on a project of their own. During the year 1939, plans were shaped, criticized, re-shaped, with the help of State and Federal agricultural authorities and other competent critics. Approved in principle by the Service Committee, it was referred to a committee, largely composed of North Carolina Friends, for more detailed study. 808 acres of farm land in Southern South Carolina, containing 10 tenant houses, 12 barns, and a school-house, were selected as suitable. The plan envisioned a

homely kind of subsistence farming, simple enough for use with very humble people, yet of a sort to lift them above existing levels of poverty, each provided with forty acres and a mule. Detailed budgets were prepared. The plan took on precision. December saw it ready to be presented to any who might be interested in contributing to its support. If ways and means are found, another year should see it well started as one more experiment in simple, cooperative community living.

### Other Focal Points of Effort

In Eastern Ohio, under the joint auspices of the American Friends Service Committee and the Federal Council of Churches of Christ in America, Friends at Shadyside and Neffs, near Wheeling, West Virginia, have been trying for some time to see what individuals living in problem areas could do by their own efforts to alter old patterns and institute new ones. It is easier, in a way, to work in a whole new setting than to try to adapt an old one, but they have to show for their efforts recreational institutes, libraries, adult education classes and study groups in methods of self-help cooperation. At Shadyside a small new cooperative store and some ventures in hand-weaving on home-made looms are tangible evidences of the year's work.

At Logan, West Virginia, the Friends Health Center is struggling valiantly to become self-supporting and self-directing, in spite of the reduced circumstances of that whole area. The Center has not received much assistance from the Service Committee in 1939 beyond the large shipments of clothing which still continue. Such support as it does receive comes jointly from local business men and takes on a special significance for that reason.

### New Patterns for Youth

The Work Camp pattern is growing—that pattern of work and study in a problem area which has hardened the muscles and stirred the minds of over 800 young people in the past 6 years. There were seven camps under the Service Committee in the summer of 1939, but beyond that, the movement has spread by a sort of contagion beyond the limits of the Service Committee to the Church of the Brethren, the Fellowship of Reconciliation, the Progressive Education Association, the Evangelical Church, and a New York group which organized itself as a Work Camp for Democ-

racy. This spread of an idea is perhaps the most important development to be recorded. Seeing that a pattern was emerging that might have a very real educational significance, the General Education Board put a sum of money at the disposal of the American Youth Commission to carry on a study of the Work Camps of the Service Committee during the summer of 1939. Dr. O. A. Oeser, head of the Department of Psychology at St. Andrew's University, Edinburgh, directed the study, guided by an advisory committee chaired by Professor E. Wight Bakke of Yale, and composed of J. Douglas Brown of Princeton, William Haber of the University of Michigan, Rupert Vance of the University of North Carolina, and Frank Brown of New York University. The report of this study will probably be available on about March 1.

The total Work Camp attendance during the summer was 182, representing 75 colleges and universities, 31 states, 10 foreign countries, and 23 religious denominations. Camps were located at the new cooperative community of Macedonia, near Clarkesville, Georgia; at Rhea Springs, Tennessee, in the T. V. A.; at the Delta



Work camps built a recreation center for the children of automobile workers at Flint, Michigan

Cooperative Farm, Rochdale, Mississippi; at Penn-Craft, Fayette County, Pennsylvania; in Flint, Michigan; San Pedro, California; and the migrant labor area of Kern County, California. In each of these camps, students worked eight hours a day (and paid to do so), building dams, helping with homesteaders' houses, digging stone from quarries, cutting down trees, leveling playgrounds, contributing their labor for some worth-while project of service to the community, and doing, perhaps it should be said, what otherwise would not be done—not at least by paid labor. Through assisting with nursery schools, clubs, and other recreational activities in the community, campers got to know their neighbors somewhat at first hand. In some locations they worked side by side with men from the area. Evenings were given over to discussions of local or regional problems and to the non-violent approach to social and international problems.

Work Camps are no longer an experiment; they are an established technique. But they will respond to the call of the times. The year ended with a reunion and conference of the previous summer's work-campers, held December 28 to 30 at Pendle Hill, near Philadelphia, at which approximately 80 were present at some of the sessions. The prevailing note was one of high seriousness. The Work Camp Committee met long and earnestly during the weeks following the outbreak of war, considering how the Work Camp program might be altered another year to make them better vehicles for constructive good-will in a world at war. In the words of the Work Camp Secretary, "The camps are a living demonstration that we are prepared to sacrifice for the national welfare in a manner consistent with our philosophy."

## The Summer Service Group

Not all of those who volunteer with the Social-Industrial Section during their summer months go out in large groups. Some, seeking a more specific apprenticeship in social service, are placed by twos and threes in settlement houses and settlement house camps in and around Philadelphia, with a preliminary conference at Pendle Hill and a weekly opportunity for discussions and field trips, together as a group. Twenty-six were so placed in 1939, coming from as far away as Nebraska. A further unit of five got a sterner introduction to the problems of poverty in the Community House at Ravenscroft, Tennessee—a stranded mining community.

## THE FOREIGN SERVICE SECTION

IT IS not possible to write of the Foreign Service Section in 1939 apart from the refugee problem. More and more, those who came crowding into the centers in Berlin, Frankfurt and Vienna came as refugees. This was true to a lesser extent of the Paris Center. Centers were established during the year largely in response to the refugee problem. Even in Shanghai, reports tell of the needs of German exiles. New personnel, where it has been added, has been largely selected with reference to this problem—experts in social service or migration.

Yet precisely because the times have been so difficult and the pressures so great, the spiritual function of these international centers of goodwill has become increasingly significant. "We need centers of calm as never before," wrote one of the workers from the Amsterdam Center in November, and the conviction has often been expressed that the most important service these centers can render is to give strength to the small groups of European Friends in their endeavor to maintain a testimony of peace in a world at war.

### The Paris Center

The work that was carried on in 1939 at the Paris Center, 12 Rue Guy-de-la-Brosse, was quiet and unspectacular, but spiritually significant. An American and his wife were in residence until late summer, but French Friends have more and more assumed responsibility for its activities. This includes handling refugee cases to the extent of about 30 a week. The Center cooperates with other refugee agencies in this work, and has received assistance in securing funds and supplies from the American Jewish Joint Distribution Committee, whose European headquarters are in Paris. Other activities include a Student Club, English classes and all the more purely spiritual functions that go along with the Meeting for

Worship. In addition, days at the Center are filled with an endless number of details—trains to be met, money to be telegraphed to a stranded traveler, people to be seen, letters to be written—countless odds and ends which fit together to make a pattern of friendliness in a city of wayfarers. Problems became more grave after September 1, but a number of English Friends were able to visit the Center and help carry them.

## The Geneva Center

The Geneva Center, which occupies one floor in the Palais Wilson, is the meeting place for many minds, because of the number of international agencies having their headquarters in Geneva. These have been brought very close to the life and work of the Center because it has served as the secretariat for the Federation of International Organizations. Contacts also have been close with the League of Red Cross Societies and the American Red Cross. The head of the center, an English Friend, wrote in December of Geneva "as probably without rival as a point of contact between peoples tragically at war" though "eclipsed as a political center." The offices of the Geneva Center also serve the activities of the considerable group of Swiss Friends.

Another floor in the Palais Wilson is occupied by the Quaker Student Hostel under the direction of an American Friend and his wife. The hostel is still in operation since the war, but with somewhat fewer in residence.

## The Berlin Center

Many types of people came to the Quäker Büro at Prinz Louis Ferdinandstrasse 5 during 1939. The work with emigration was the outstanding expression of Friends during the year—a direct response to a direct need. But the workers at the Center also had a very happy and close relationship with the members of the Berlin Monthly Meeting of Friends and with other German Friends groups. In addition to the regular meetings for worship, special children's meetings were held once a month. A monthly party, a sewing group, a small handcraft group, rounded out the program and brought the Center closer to German Friends. In its refugee case-work, the Center had close contact with other agencies, Jewish, Catholic, and Protestant, and also with the American Consulate.



The group at Geneva Hostel includes students and Friends from many lands

Until late August, the Center had both English and American representatives. In addition to the general Center workers, two American social workers were sent over in June by the Refugee Section to assist the German social worker who had charge of the case-work. These still remain. For a time immediately after the outbreak of the war there were no American representatives, but they were able to return shortly. Their services were supplemented for one month in the autumn by a Swedish Friend.

### The Vienna Center

Any one who climbed the 80 or more steps to the Vienna Friends Center at Singerstrasse 16 would have found until late August a large staff of English workers giving most of their time to emigration problems. An American social worker was sent over in June by the Service Committee with special reference to cases destined to emigrate to the United States. She remained until November. The withdrawal of English Friends has left the Center largely under local direction, and the refugee need in Vienna remains acute and baffling.

## The Frankfurt Center

A small Center at Hochstrasse 8 carried on refugee work under local direction with assistance during the summer months from an American case-worker. Activities have become considerably curtailed since September.

## The Amsterdam Center and the International School at Ommen

The small Amsterdam Center, which opened during the year and which is now located at Raphaelplein 2, was partly an outgrowth of the pressure of the refugee problem on Dutch Friends and partly the sign of increasing vitality in the Dutch Quaker group itself. It too has functions both spiritual and practical. As direct communications with belligerent nations become increasingly difficult, this small new center, like those in other neutral countries, becomes increasingly important not only in carrying on definite refugee activities, but even more in keeping open channels of understanding.

The International School at Ommen, situated in the beautiful Eerde Castle, has been an interesting joint venture of English, Dutch, and American Friends. It was first organized to provide a progressive educational experience for German children—especially those who were having to live under the pressure of racial persecution. It was truly international, however, and combined college preparatory work with training in handicrafts and other skills. During the year a small agricultural training project for refugee boys was started near by. The outbreak of war cut down the enrollment somewhat, but there were still 80 children in residence and the tone of the school was not materially affected.

## The Copenhagen Center

In response to increasing refugee needs, Scandinavian Friends, with the approval and support of British and American Friends, have set up a temporary center at Vendersgade, 29. Copenhagen has become, since the war, a necessary link in the difficult chain of communication.

## The Shanghai Center

Early in the year a small Friends Center was opened in Shanghai in the International Y.M.C.A. Building by two English Friends representing jointly the Friends Service Council in London and the American Friends Service Committee. An American Friend, temporarily in Shanghai, represented American Friends in this venture for the time that he was able to be there. There is a spiritual mission for the Center to perform for the little group of Friends in China. These have a weekly meeting for worship averaging about 20. There is a very large German refugee problem in Shanghai, and conditions are very grave for many of the poorer Chinese themselves. Early in the autumn two young men from the Church of the Brethren presented themselves at the Center with plans for a joint relief project. The Shanghai Center itself approved this cooperation, as have the Friends Service Council, the American Friends Service Committee, and the Church of the Brethren. Further details have not yet been received.

## Quaker Commissioners

Following a deputation of three Friends to Germany in December, 1938, in the interest of refugee work, it was decided to try to keep one or more Quaker "Commissioners" always moving about through Europe and especially within Germany to keep channels open for as satisfactory a settlement as possible of the refugee problem. Accordingly, a series of such commissioners have been in Germany and other strategic localities. In November a mission of three went over with special reference to possible relief needs in Poland.

It is difficult to evaluate the activities of these Commissioners and the other Center workers, yet a variety of testimony points to their value. "Those with whom we have worked," wrote one of the European workers in late November, "seem to place far more importance on our being here than we do ourselves. We know how little we have been able to accomplish, but it does seem that our presence makes a difference. This has come out in little ways . . . People seem to have felt it meant something far beyond what we are or can be in ourselves. And this is what it should mean and what we believed it would mean—a kind of symbol and a tangible evidence of another world."

## THE REFUGEE SECTION

The work of the Refugee Section is one of the legacies—one of the *dividends*—of the work which the Committee carried on in Germany just after the last war. Memory of this past service seems to have been a factor in bringing hard-pressed men and women to the Friends Centers in Berlin, Vienna, and Frankfurt for help, and also in winning from the authorities confidence and certain necessary permissions needed by the Quaker workers in carrying on their task.

It has been, in 1939, an ever-mounting task. People came in increasing numbers to the Centers in Europe, and correspondence increased proportionately between Germany, the border countries which were the first temporary refuge, and the home offices in London and Philadelphia. Requests came from as many as 45 countries, and since there were Quaker representatives in only a few, the problem became immensely complicated. To get even one hunted and haunted family across the various international boundaries, to some place of final settlement with a minimum of social and spiritual dislocation is no slight task. It takes the services of many workers and the cooperation of many agencies. The American Friends Service Committee, as one of these agencies, has taken for its province only those families who do not come logically under the care of any other recognized agency, Catholic, Protestant, or Jewish, and only those services not otherwise adequately covered. This only rarely includes the giving of relief. Non-sectarian in character, the Committee is most often called upon to assist those where the husband is of one faith, the wife of another, or where a family no longer has any confessional tie.

The increasing magnitude of this service may be gauged by the case-load of the Philadelphia office, which increased during the year from 770 to 3737 cases, 1245 of these requiring active care at the close of the year. Figures available from February 1 to December 31 indicate that, out of 2767 requests received, 658 were from persons already in the United States, 2109 from persons in other countries. These figures represent not so much an actual increase in the immigration of refugee groups as an increased pressure within Germany on the Jew and the non-Aryan to leave the country—a pressure which has been heightened since the war. Moreover, the recall of English workers from the German Centers on the outbreak of war has multiplied the responsibility of the American workers.



The staff of English, Dutch and Americans at the Friends Center, Amsterdam

Here, then, is a service dedicated to the sanctity of individual personality, and to a mission of reconciliation in the midst of conflict which is of the essence of Quaker service. As such, it is of deep spiritual significance. It spreads its influence from Vienna or Berlin all the way to some remote community in Iowa or Kansas where some family finds its ultimate home. Perhaps it can best be understood if its different activities are presented in that order in which a newcomer to this country encounters them in his long journey.

## In Europe

Those who come to the Friends Centers in Berlin or Vienna for advice generally want one thing—to leave the country, to get away from incredible anxiety and pressure. There may be special pressures. A man in concentration camp will only be released if he will leave the country in one month; or he lives in constant fear of being hurried off to Poland; or his family is scattered in various countries and he yearns to reunite them. But he cannot leave without a visa, and the United States visa requires an affidavit of support, guaranteeing that he will not become a public charge. Who will sign the affidavit? A committee can not—only an individual. He must have passage money. Before the war this could be secured

on a German boat in German marks; that is not possible now. Who will buy his passage? According to law, it must be an individual. Out of 582 requests, only 137 affidavits were given or promised during the year. They are hard to procure, but each is a passport to freedom for some hard-pressed individual or family. "I can but feebly express the joy I feel," wrote one recipient. "I am so happy to know that there are still human beings who are willing to help. . . . Your kind letter was the first sign of another and better world, and to live and work in that world makes me so glad that I have found new energies of life in myself."

Workers in the foreign centers are liaison officers between individuals, consular offices, steamship agencies, and those resources in America (and before the war, in England) on which emigration and resettlement depend. Interviews, conferences, cables and letters fill their days, and they work under great urgency, but each family assisted is a sufficient recompense.

## In New York

When all arrangements are finally completed for emigration, workers in the New York office of the Refugee Section keep in touch with landing schedules, and are prepared to arrange for hospitality, and to direct newcomers to the national committee which can best care for their resettlement. This may or may not be the American Friends Service Committee.

## In Philadelphia

Those who continue in the care of the Refugee Section usually appear soon after landing at the Philadelphia office with a card from the New York office to one or another of the social workers. They sit nervously in the waiting room, stand up, bow, and click their heels when someone speaks to them. They are still far from being American. In broken English they tell their stories—lawyers, doctors, merchants, innkeepers, teachers, candymakers, jewelry designers, cooks. If America wants what they have, it is comparatively easy; otherwise they must develop painfully what America wants. Some will succeed quickly; a few never will—but that is true of any human adjustment.

They may stay a little while in a small refugee hostel in Bryn Mawr for the staff to become better acquainted with their needs and abilities. Twenty-eight visited the hostel during the year. They may go back to New York until plans are completed for resettlement in some less crowded area. They may go for a period

of retraining and adjustment to the home of some friends of the Refugee Section. Sixty-six were so cared for during the year. Perhaps they will go out to the Scattergood Hostel and Placement Center in Iowa as a way-station toward final settlement. Sometimes a person experienced in industry is assisted in reestablishing himself in this country in the same line of work. One man, so established in North Carolina with the help of local Friends, is already, after only a few months, not only supporting a family reunited from three different countries, but is also employing several Americans in a business which is filling a long-felt need in the community. During the year, 165 placements, caring for 234 individuals, have been effected with the help of local Friends' groups and other interested individuals.

### The Scattergood Hostel

Since social, psychological, and spiritual adjustments come slowly, and often more easily in a group, the Refugee Section has been experimenting with a pattern for re-training which takes cognizance of these two points. The Scattergood Hostel and Placement Center, near West Branch, Iowa, is the result. Iowa Friends generously put the buildings of the old Scattergood School at the disposal of the Service Committee in the spring of 1939. Here, a changing group of some 30 Germans and 8 or 10 Americans live and work together on a cooperative basis—the Germans learning American ways and the American idiom, the Americans learning appreciation for these newcomers, and for the pains and heroisms of the human spirit under stress. The daily program includes classes in English and civics, in "how to be polite in America," and participation in dishwashing, gardening, and all those homely arts which contribute to America's pattern of independence. Those with professorial backgrounds are given introductions to American university life through nearby colleges; musicians are given the opportunity of playing in recitals in the surrounding communities; business men are given helpful introductions to those in similar lines in the vicinity, or are steered into a new line where employment openings are more frequent. Germans remain at the hostel three or four months, and while they are there a placement expert is on the lookout for appropriate openings. Fifteen such placements have been arranged from Scattergood, accounting for 22 people out of the 52 who have gone there thus far. Most of the others have not yet been there long enough to be ready to move on into this last stage of resettlement. Thus far, the hostel seems to be proving itself a valid experiment, and it is expected that others will be opened in 1940.

## The Finca Paso Seco in Cuba

Not all the refugees who cross the Atlantic are able to take up their new life in the United States. Many, caught in the technicalities of immigration, lured by steamship agencies, or pressed to leave before an American visa can be obtained, go first to Cuba. Once there, it is a wearisome process to get away, yet they are not allowed to work in Cuba except as their own employers. This has created a serious refugee problem in Havana. An exploratory visit to Cuba in the spring led to the decision to open a hostel and training center near Havana for younger men to train them during their period of waiting in the Spanish and English languages, in crafts, and simple agriculture, to try to salvage some of the spiritual values so seriously threatened, and to demonstrate the interest in these newcomers of some outside group, for whatever modifying effect this might have on local public opinion. This project was opened by Dr. Hertha Kraus toward the end of July with 52 Germans and 5 Americans. The Church of the Brethren has cooperated in this project.



Young German refugees made their own tractor at the Quaker "Finca," Cuba

## The Sky Island Hostel and Other Vacation Projects

The summer of 1938 disclosed the need of some place near New York where newcomers caught in the city's heat could get away for a short period to a place of peace and beauty. This need, filled in 1938 by the Aberdeen Camp near Poughkeepsie, was very beautifully cared for in 1939 at the Sky Island Hostel near Nyack, made possible through the generosity of Dr. Viola Bernard and her sister, Mrs. Whittelsea of New York. Sixty-nine newcomers were given holidays averaging a fortnight. The Refugee Section also cooperated with the Experiment in International Living, a group interested in fostering mutual acquaintance between students of various nationalities, in a summer language camp at Goddard College in Vermont. The Refugee Section provided 15 Germans to teach German, French, art and music, to a group of young Americans recruited by the Experiment.

## A Note on Organization

Inasmuch as the work of the Committee on Spain came to focus increasingly on the problems of Spanish refugees after the close of the war, the work of that Committee was amalgamated with that of the Refugee Section in organization during the course of the year, the secretary of the Committee on Spain becoming co-director of the Refugee Section. A Polish Committee was also organized to explore the possibility of undertaking some program of relief in Poland. If such work goes forward, it will also bear a close relation to the work with these other refugee groups.

## Volunteers

A record of the activities of the Section would not be complete without mention of the very extensive and able volunteer assistance which it has received during the year. Forty volunteers have assisted for greater or lesser periods of time in the Philadelphia office; others in the New York office. The various hostels could not carry on nearly as adequate programs were it not for the presence on their staffs of volunteer personnel. In addition there has been the cooperation of countless individuals or groups in communities all across the country in hospitality, placement, the giving of affidavits, and other services, without which the Section could not hope to carry out any adequate program in immigration or resettlement.

# THE COMMITTEE ON SPAIN

## In Spain

Quaker relief work in Spain reached a peak of activity in the first three months of 1939. Shipments of wheat from the United States, and foodstuffs of infinite variety donated by various governments through the International Commission enabled the Quaker workers to distribute supplies sufficient to feed more than 400,000 people. Hunger mounted more rapidly than food could be delivered to the beleaguered Republican zone. When peace finally came on the twenty-sixth of March, a civil population of twelve million people had reached last stages of exhaustion.

Before the close of the war, American workers in Spain were operating children's hospitals, work shops for women, children's colonies, infants' milk clinics and children's dining rooms. Others were distributing clothing and food, the units working separately on each side of the war. Then, one day, one of the workers, looking out of the window, saw someone putting up a flag. Then there was another flag, and still another. Those who had no flag hung out scarfs, or even sheets. Cathedral bells started ringing. The war was over. "Well, it has happened," wrote this same worker. There was no longer any Loyalist side. She was working on the *other* side, now. Thus, two representatives who, throughout the war, had been working in Nationalist Spain in cooperation with *Auxilio Social*, became part of a united service for the Spanish people as a whole.

Human need continued, but in the processes of disorganization and reorganization that followed the close of hostilities, it became increasingly difficult for private groups to minister to that need. In the confusion, food supplies were confiscated; administration became increasingly complicated. The actual work of administering food began to concentrate itself more and more in the hands of the *Auxilio Social*, official relief agency of the Nationalist Government, whatever the source of the supplies, with Quaker workers acting as inspectors to determine places of greatest need.

This sort of work took a smaller personnel than the larger work of child-feeding and physical care that had preceded it. The workers were therefore gradually withdrawn. In October, Howard Kershner, director both of the work of the American Friends Service Committee and of the International Commission for the Assistance of Spanish Child Refugees, crossed the border from



International Commission food on Valencia docks for distribution by AFSC workers

France into Spain for the ninth time to survey the situation as it affected foreign participation. He reported that full restitution had been made for all confiscated supplies, that the *Auxilio Social* was working efficiently and impartially in its welfare work, feeding nearly 800,000 children and old people a day, and distributing large amounts of clothing. The American Friends Service Committee workers who were left were receiving every courtesy, and their recommendations were promptly adopted. In spite of the general efficiency, however, he reported that auxiliary help in foodstuffs, clothing and medical supplies would be needed through the winter.

## In France

The fall of Barcelona and, later, the collapse of the Central zone forced half a million refugees into France and North Africa. Following the refugees, English Quakers set up canteens along the roads that crossed the snow-filled Pyrenees. The following weeks called for superhuman effort in the concentration camps and among the bewildered Spanish women and children scattered in two thousand colonies throughout France. In this work, English and American workers joined forces with the International Com-

mission which became the principal foreign agency aiding the Spanish people.

While thousands of refugees gravitated back to Spain throughout the year, the lot of 200,000 remaining in France in September became especially hard when war was declared. With a million of her own people evacuated from their homes, it is small wonder that France found it difficult to care for the Spaniards within her borders.

Men, women and children were herded into concentration camps. As cold weather came on, conditions in these camps became worse. Reports, for example, revealed seven hundred people sleeping in a leaky shed; others were in an old, unused prison, still others in a dark, dreary church. These were the worst—but even in the better equipped camps, there was much need of clothing, bed-coverings, medical supplies.

The International Commission was able to perform certain services for these refugees—orthopedic supplies for mutilated soldiers, clothing, milk, blankets, and medical supplies. The Commission assisted in emigration plans where possible. In addition, it has been able to render a much-needed service in taking over certain existing children's colonies or establishing new ones so that some of the children in concentration camps, at least, might be cared for under somewhat more favored circumstances. Seven Service Committee representatives were associated with the International Commission in its work in France.

## Magnitude of Relief Administered

Ten cents secured one bushel of American surplus wheat to feed Spanish children. One bushel of wheat made 100 loaves of bread. A child's daily ration was half a loaf. Ten cents thus gave daily bread to 200 Spanish children, as relief was reckoned during the height of the Spanish child-feeding program. Simple arithmetic can gauge something of the human magnitude represented by the shipment of nearly 750,000 bushels of wheat during the year. The wheat was distributed by Service Committee workers, together with gifts of other foods from the International Commission valued at \$1,236,030. The American gifts were valued at \$490,005 and were made possible by the cooperation of the Mennonite Relief Committee, the Church of the Brethren, the Spanish Child Welfare Association, the Committee for Impartial Civilian Relief, appoint-



Quaker workers aid Spanish refugees in camps and colonies in Southern France

ed by President Roosevelt to raise funds for the purchase and shipping of surplus wheat to Spain, and the American Red Cross. More than twenty tons of clothing, shoes, soap, medicines and other supplies were packed in the Service Committee storeroom and shipped to Spain during the year. These supplies included gifts from the cooperating organizations.

The American Friends Service Committee has been closely associated in all its work in Spain and France with the Friends Service Council, London, and the Service Civil Voluntaire International, a Swiss organization. In 1937 the International Commission for the Assistance of Child Refugees in Spain had been organized largely by English Friends for the purpose of receiving governmental and other grants for feeding Spanish children. The Commission began to function in April, 1938, and has received contributions from the governments and the citizens of 24 countries. Like the American Friends Service Committee, it works on a non-partisan basis, and inasmuch as Howard Kershner has been the director for both organizations, the association has been of the closest.

## Personnel

During 1939, twenty-two Americans were engaged in Spanish relief services under the American Friends Service Committee.

*Twenty-three*

In addition, the American Friends Service Committee maintained English workers in connection with the hospitals and children's colonies in Southern Spain. There was close collaboration between the Committee's representatives and those of the Friends Service Council, London, who were principally located in Barcelona. The Committee is indebted to many Spanish associates, without whose valued volunteer services the work could not have been carried on.

The months after the war saw a gradual withdrawal of American and English personnel. Through the summer, thirteen representatives continued to work with the *Auxilio Social* in the distribution of food shipments. By December this work was practically completed, although certain gifts of medical equipment are designated for Spain in 1940. The desire of Alfred and Norma Jacob to share in the spiritual life of the Spanish people has led to their permanent residence in Barcelona as representatives of Friends Service Council. Through them, the Committee is able to keep in touch with many persons with whom it has established friendly associations.

### What Remains?

Unemployment, civil unrest and shortage of food in Spain still harrow the people with destitution. Though Quaker relief has been brought to a close in Spain, the International Commission will ship food, clothing and medical supplies valued at \$75,000 early in 1940. The food is especially intended for infants and the medical supplies also are for child-care. In this connection, six trucks equipped as mobile clinics have been built in the United States for shipment to Spain. With a Spanish doctor and nurse, these will tour the provinces and for the first time bring medical attention to the children of the more remote villages. As a farewell gift to the Spanish people, these trucks bear on their sides the following inscription: "Donativo de Los Amigos Cuaqueros y La Comision Internacional"—"A gift from the Quakers and the International Commission." As these cars travel the roads of Spain they may bring remembrance of a group of people with a red and black star on their lapels who fed unknown Spanish children on both sides of the civil war.

## THE PEACE SECTION

AS EUROPE'S tense war of nerves during the spring and summer of 1939 turned into actual warfare in September, the international situation presented new problems to the Peace Section, and new demands on the energies and resources of its staff. Its educational activities faced new goals: to end the war through continual attempts at mediation, to keep America out, and to contribute wherever possible toward a just and lasting peace. It highlighted the Quakers' historical position in regard to war and made pertinent the stand of the conscientious objector.

To cope with these new and additional responsibilities, the Peace Section began to reap the harvest of ten years' work. With the outbreak of war in Europe, letters began to pour in—from former Peace Volunteers, persons who had attended Institutes of International Relations, young Friends in all parts of the country, pacifists in other churches—all asking for guidance, asking to be used in some constructive way. Young people were willing to volunteer their time and energies now in order to interpret their pacifist philosophy and their refusal to be conscripted if America should become involved.

A series of regional conferences to discuss the peace testimony of Friends took on a heightened urgency and seriousness because of the European war. These conferences grew out of a concern expressed at the March meeting of the American Friends Service Committee, held at Guilford College in North Carolina, and indicated a growing interest in peace problems. The nine conferences held in eight different states in the fall of 1939 resulted in a new identification of local areas with the work and aims of the Service Committee.

A Pacifist Handbook, written in question and answer form as a basis for study, was prepared by the Peace Section in cooperation with other pacifist groups. More than 9000 copies were distributed. Plans were laid for bringing together early in 1940 peace leaders from Friends Meetings and other religious bodies all over the country, for a four weeks' seminar on the implications of pacifism in relation to the present situation. These special activities came at the close of a year that was already crowded with the usual program of student peace work, institutes and regional conferences.



Students in an informal discussion at an Institute of International Relations

## The Institutes

The American Friends Service Committee, in cooperation with the Congregational Council for Social Action and local committees, held eight Institutes of International Relations in the summer of 1939. Here men and women from many walks of life came together for ten days to study and discuss problems in international relations, community organization and education for peace. There were teachers, ministers, farmers, students, representatives of men's and women's organizations. The faculty for these institutes included such well-known leaders as Eduard Benes, former president of Czechoslovakia, T. Z. Koo, secretary of the World Christian Federation, Major George Fielding Eliot, authority on military affairs, R. H. Markham, European correspondent for the Christian Science Monitor, Carlton Washburn, educator, Kirby Page, author and lecturer, Samuel Guy Inman, authority on Pan-American affairs, Gerald Heard, British author and scientist, Norman Thomas, author and political leader, Walter Van Kirk, director of the National Peace Conference, Charles Fenwick, professor of political science, Bryn Mawr College, and Dorothy Detzer, executive secretary of the Women's International League for Peace and Freedom.

An analysis of these names readily indicates that they represent many and sometimes opposing points of view. The Institutes do not aim to inculcate any one philosophy, but rather to quicken intelligent interest in the issues involved. The aim is education, not indoctrination. One thousand two hundred eighty-five people were in attendance at these institutes for at least five days or more; approximately 23,000 attended the public evening lectures. This year rounded out a decade of such institutes, and 8,600 people have attended institutes during the last ten years. This number does not bulk large, but eight thousand people in strategic educational positions, can do much to raise the level of thought in their own communities. These institutes were held at Bethel College, Newton, Kansas; at Grinnell College, Grinnell, Iowa; at Reed College, Portland, Oregon; at Mills College, Oakland, California; at the University of North Carolina, Chapel Hill, N. C.; at Wellesley College, Wellesley, Mass.; at Whittier College, Whittier, California; and at Lafayette College, Easton, Pa.

## The Student Peace Service

Last summer ninety-five students in units of four and five went out into seventeen different communities to put their convictions into action in two months of peace crusading. They went to Kansas, to Western Pennsylvania, to Massachusetts, with suitcases full of pamphlets and radio scripts, with very little money in their pockets, but with courage and a very serious and steadfast resolve. These young people came from forty-three different colleges, fifteen religious denominations and twenty-three states. Carefully chosen for their academic background, strength of character, adaptability and personality, they were given ten days of intensive training at one of the Institutes of International Relations. To cover costs of traveling, training, equipment and maintenance, each brought with him \$100, to be budgeted and disbursed through Student Peace Service. In most cases the money had not come easily; it had been raised dollar by dollar with the help of the field secretaries, and contributions from college and civic groups.

The Peace Volunteers were sent to towns in which the ground had already been prepared by local sponsoring committees who continued to advise them. There they carried on a campaign of peace education through meetings, plays, newspaper articles, study groups, personal interviews, distribution of literature. Public speeches alternated with private cooking and laundry, to keep within a \$5.00 a week budget.



A Peace Council of local citizens set up by Student Peace Volunteers

Each year it becomes more and more evident that the greatest values of the Student Peace Service lie in the personal development of the outstanding students who are its Volunteers. They worked last summer in the shadow of impending war yet they did not lose courage nor faith in the ultimate value of their task. One Volunteer wrote: "In the final analysis, the real test comes from within an individual; and regardless of what seems to some people to be the failure of our anti-war work, I feel as though I have won the real struggle, the struggle within myself. My convictions have been established, my ideals made definite, and my energies directed."

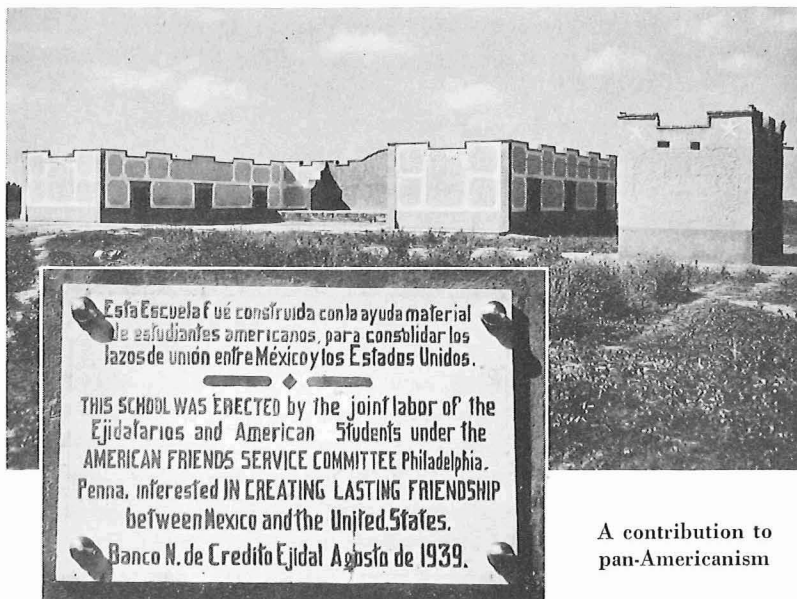
During the winter, the Student Peace Service worked on approximately 300 campuses, and the four members of the field staff cultivated a hundred of those intensively. On many of the campuses where former Peace Volunteers are located, effective work has been carried on through them by correspondence. A regular literature service, including the *Student Peace Digest*, goes out each month. Both the office and field staff give help in planning inter-collegiate conferences, Armistice Day programs, in forming peace fellowships, in recruiting the summer Volunteers.

## The Mexican Service Seminar

Under the direction of Ray Newton, secretary of the Peace Section, fifteen students and three leaders went into the newly developed Laguna area of Mexico to help the local Ejidarios and a group of Mexican students build two adobe school buildings. Together with the Mexicans, they mixed the adobe mud and made it into bricks, while skilled workmen completed the building. As they worked, Mexican women and brownfaced muchachos carried water and sand or spread a table for lunch. Evenings were spent in studying the local area, its problems and development. After the period in Laguna, the group went down to Mexico City for more intensive study of Mexico's social and international problems.

## Literature Service

Since a well-intentioned mind can not go far without a well-informed mind, the literature service of the Peace Section has been one of its most important activities. Mention has already been made of the extensive distribution of the *Pacifist Handbook*. One thousand one hundred twenty-four literature requests were filled during the year. Devere Allen has chosen Brussels as the vantage point from which to send out his *No Frontier News Service* releases. Increasing governmental censorship and propaganda give increasing value to such a publication.



Esta Escuela fue construida con la ayuda material de estudiantes americanos, para consolidar los lazos de union entre Mexico y los Estados Unidos.

THIS SCHOOL WAS ERECTED by the joint labor of the Ejidarios and American Students under the AMERICAN FRIENDS SERVICE COMMITTEE Philadelphia, Penna. interested IN CREATING LASTING FRIENDSHIP between Mexico and the United States.

Banco N. de Credito Ejidal Agosto de 1939.

A contribution to pan-Americanism

## THE FELLOWSHIP COUNCIL

INASMUCH as the American Friends Service Committee is the outgrowth of the *Religious Society of Friends*, it is not enough that it works with stone and wood, as at Penn-Craft, or with bread and milk, as in Spain. There is a living spiritual structure to be reared and cherished as well, and this is the function of the Fellowship Council. It seeks to quicken and deepen the inner spiritual message of the Society through a closer cooperation of existing Meetings, through inter-visitation, the fostering of new Meetings, and the establishing of closer connections with seekers and "friends of the Friends." Representatives from all the Yearly Meetings are chosen by the Council and approved by the American Friends Service Committee. There are now 91 members and 82 Field Cooperators.

### The Wider Quaker Fellowship

The twentieth century, like the seventeenth, is an age of seekers, and the Society of Friends seems to answer an inner need for a good many of these seekers who nevertheless do not wish to sever their existing religious affiliations. It was for such as these that the Wider Quaker Fellowship was formed in 1936. The number who have wished to become members of this Fellowship have increased in 1939 from 350 to 753. They come from 39 states, from 20 foreign nations and 5 continents. Many have come through contacts with Friends Work Camps and the Student Peace Service. Ministers, rabbis, teachers, physicians, students, social workers, writers—they bring a variety of rich endowments—intellectual, spiritual, artistic. It is impossible to keep as close and intimate contact with these men and women as the Fellowship Council would like, but they receive some special piece of Quaker literature four times a year, and efforts are made to bring them into contact with each other and with Friends. An annual 2-day meeting of the Council in Washington has drawn into closer fellowship with Friends many of these members of the Wider Quaker Fellowship. No attempt has been made to organize the Fellowship in any formal way. It is a band of men and women, widely separated

in space but closely linked in commitment to a special way of life, in which the forces of love and truth and friendliness are uppermost.

## New and United Meetings

Another sign of a resurgence of the spirit may be seen in the spontaneous development, in the last few years, of many small new Meetings, especially in university centers. Sometimes they are too far from any existing meetings, or too composite in nature, to fit into the usual pattern of affiliation with Quarterly and Yearly Meetings. The Fellowship Council assists in establishing these meetings, after suitable investigation, where affiliation with other Friends' groups appears impracticable. Twelve meetings have been so recognized. The Fellowship Council has also nurtured other new and united meetings, helping them through their first months of organization and growth.

## Intervisitation

Since Friends and friends of the Friends are widely scattered, intervisitation has always been a feature of the Society. The best way to draw isolated groups together is for people to travel about, sitting by many firesides, speaking in many meetings. To make such activity simpler, and insure that its benefits shall be more widespread, the Fellowship Council arranges itineraries for visiting Friends, drawing liberally on the Handbook of the Society of Friends and the Calendar of Yearly Meeting dates. This year the Council was fortunate in the opportunity that came to its secretary to travel in Europe as a Geneva Fellow for the summer months, visiting Friends in London, Paris, Berlin, Vienna, Geneva, Copenhagen and Stockholm.

## The Publication Committee

If the visits of men and women can do much in the spreading of a message, so can the printed page, and the Publication Committee helps to see that Quaker articles of significance are made available for distribution. The committee has published within the year *The Philosophy of Quaker Service* by Rufus M. Jones and *A Selected List of Quaker Books*. It has cooperated in making other

reprints. Other services of the Committee are the Quaker Bibliography and traveling libraries.

## A Ministry of Letter-Writing

Many letters come in to the office of the Fellowship Council from seekers wanting information, wanting advice and understanding, from travelers wanting addresses, from remote Friends wanting closer contact, and for each letter that comes in, one goes out. In addition to these individual letters the so-called Quaker letter is sent out four times a year to members of the Society who are too far away from existing meetings to keep in touch with Friends' activities.

\* \* \* \* \*

Much that the Fellowship Council does may seem from this account to be of an organizational nature. But it has a deeper function, as well. Friends have lived out their faith in terms of bread—and soup—for the hungry, clothes for the poorly clad, houses for those who need them. The Fellowship Council is charged with the duty of preserving at the very center of the American Friends Service Committee the counter-truth that man does not live by bread alone.

## THE CLOTHING COMMITTEE

A visit to the storeroom of the American Friends Service Committee at 1515 Cherry Street reveals bales and bales of clothing and blankets, ready and labeled for Spain, France, Cuba, West Virginia, and Mexico. Over 26 tons of clothing, soap, medicine, and shoes have gone to Spain in 1939; over 3 tons to Logan, West Virginia; 438 pounds to Syria; 492 pounds to the Scattergood Hostel in Iowa. Seven hundred and sixty-three pounds of books and movie films went to Holland for use in refugee camps, and 344 pounds for the refugee hostel in Cuba for its educational program. Other miscellaneous shipments, including several to colored schools in the South, bring totals for the year to over 30 tons.

The articles packed in those bales have come from many places as far away as Uruguay, Canada, and Bermuda, as well as from all parts of the United States. A thousand individuals and nearly 400 groups have contributed—Friends groups, groups from the Church of the Brethren, the Mennonites, and other churches,

Needlework Guilds, and business firms. Another phase of the work is the wholesale purchase of knitting yarn and its distribution to people in many places who would like to knit as a part of their contribution to the relief of need. Five hundred and four pounds of yarn in tans, greens, reds, blues and rusts were sent out at cost during the year to 100 individuals or groups, to be returned to the Storeroom for distribution. All of this work of collecting, packing, and shipping, is handled by a Clothing Committee.

## THE INTERNATIONAL STUDENT HOUSE

The International Student House, at 1708 New Hampshire Avenue, in Washington, performs somewhat the same service in this country as the Quaker Student Hostels in Geneva or Amsterdam. With a permanent household of 19,—Mexicans, Chinese, Germans, Russians, Americans,—a larger number for meals, and a constant procession of transients, fellowship reaches across barriers of race and creed. The house is also the headquarters for a large and flourishing international club, which gathers for Sunday suppers, lectures, folk dancing, French and German Clubs, teas, hikes and parties. Backed by the effective service of a Washington Committee and subsidized only to the extent of the director's salary, the house has otherwise operated from its beginning on a self-sustaining basis.

## AWARDS

It is a source of profound gratitude that the American Friends Service Committee has received three awards in 1939 as an expression of public confidence and support. The first—the Philadelphia Award, established by the late Edward Bok, was given personally to the Chairman and Secretary. The second—the Humanitarian Awards of the Humanitarians and Welcome Chapter No. 201, Order of the Eastern Star, were given jointly to the Chairman as the representative of the Committee, and to Mrs. Franklin D. Roosevelt. The third, the Wateler Peace Prize, was awarded jointly to the American Friends Service Committee and the London Friends Service Council. It was established by Mr. J. G. D. Wateler of The Hague. Such tokens of approval are very gratifying, yet they make the Committee conscious of how little it has been able to do in relation to the whole body of human need.

# QUAKER CENTERS ABROAD

Where English and American Friends  
seek to further the spirit of good will among men  
in foreign lands

- AFRICA:** Kisuma via Mombasa—Mr. Fred N. Hoyt, Kenya Colony, East Africa. Johannesburg—F. W. Fox, P. O. Box 7205, South Africa.
- AUSTRALIA:** Tasmania, Hobart—Bronwen Williams, Friends School.
- CHINA:** Canton—Dr. William W. Cadbury, Lingnan University, Chengtu—William C. Sewell, Robert E. and Margaret I. Simkin, West China Union University, West China. Shanghai—Harry T. Silcock, Friends Centre, 169 Yenn Ming Yenn Road.
- CUBA:** Puerto Padre—Emma P. Martinez; Jaruco, Havana—A. Ellen W. Pain.
- DENMARK:** Copenhagen — Myrtle Wright, Vendersgade 29, IV.
- ENGLAND:** Friends' Service Council, Paul D. Sturge, Friends' House, Euston Road, London, N. W. 1.
- FRANCE:** Paris—Henri VanEiten, Société des Amis, 12 Rue Guy-de-la-Brosse, Paris (5e).
- GERMANY:** Berlin—Howard W. Elkin-ton, Friends' International Centre, Prinz Louis Ferdinandstr. 5, Berlin N. W. 7.  
Vienna—Kate Neumayer, Friends' Centre, Singerstrasse 16, Vienna 1.
- GREECE:** Saloniki — Theodor Litsas Charles House, The Farm School.
- HOLLAND:** Amsterdam—Friends' Centre, Raphaelplein 2; Friends' Student Hostel, Jim Lieftinck, 14 Valeriusplein.
- HUNGARY:** Budapest—Fred Hankin-son, Hotel Hungaria.
- IRELAND:** Dublin—Elsie M. Wigham, Edenvale, Conyngham Rd.
- INDIA:** Madras—Frederick Gravely, Museum House, Pantheon Road, Egmore; Itarsi—Ranjit M. Chetsingh, Friends' Settlement, Rasulia, Ho-shangabad, C. P.
- JAMAICA:** Highgate—Sada F. Stanley, Highgate P. O., B. W. I.
- JAPAN:** Tokyo—Gilbert Bowles, 14, Mita Dai-Machi Shiba.
- MEXICO:** Matchuala, S. L. P.—Francisco E. Estrello, Apartado Postal 29, Mexico City, Daniel and Elizabeth Marsh Jensen, Calle Jo-tutla 22.
- NEW ZEALAND:** North Canterbury—Philip J. Thorne, Sefton.
- NORWAY:** Stavanger — Thoralf Bryne, Brynes Rosen og Planteskole.
- PALESTINE:** Ramallah—Dr. Khalil A. Totah.
- SPAIN:** Barcelona—Alfred Jacob, Avenida Virgen Montserrat 34.
- SWEDEN:** Stockholm—Greta Stendahl, Askrikegatan 3.
- SWITZERLAND:** Geneva—Bertram Pickard, Société des Amis, and Anne Z. Forsythe, Friends' Students Hostel, Palais Wilson, 52 Rue des Paquis.
- SYRIA:** Beirut — Dr. Najeeb Saad, American University; Brummana—H. John Turtle, Brummana, Mt. Lebanon; Ras-el-Metn—Daniel Oliver, Hammana, Lebanon.

# FINANCIAL REPORT

The accounts of the American Friends Service Committee have been audited by George Schectman, C.P.A., Lafayette Building, Philadelphia, Pa. The reports are on file in the office of the Committee, 20 South Twelfth Street, Philadelphia, Pa.

## STATEMENT OF ASSETS AND LIABILITIES COMPOSITE FUND

December 31, 1939

### GENERAL FUND

	<i>Assets</i>	
Cash		\$32,461.75
Securities at Cost		23,996.25
Other Assets		5,969.59

---

\$62,427.59

	<i>Liabilities</i>	
Balance, General Fund		9,394.22

---

\$53,033.37

### AMERICAN FRIENDS FELLOWSHIP COUNCIL

Balance 1.44

### PEACE SECTION

Assets	\$ 4,026.10
Liabilities	1,215.00

---

2,811.10

### SOCIAL INDUSTRIAL SECTION

	<i>Assets</i>	
Cash		\$ 4,619.07
Accounts and Advances Receivable		600.19

---

\$ 5,219.26

Liabilities 886.50

---

Balance, Social Industrial Section \$4,332.76

### FRIENDS SERVICE, INCORPORATED

Assets	\$47,607.81
Liabilities	15,003.93

---

Balance, Friends Service, Incorporated \$32,603.88

---

Balance, Composite Fund, December 31, 1939 \$92,782.55

*Thirty-five*

# STATEMENT OF INCOME COMPOSITE FUND

December 31, 1939

## GENERAL FUND

Contributions for 1939	\$87,319.33	
Other Sources—including interest, re- funds, special income, etc	5,274.31	
		\$92,593.64

AMERICAN FRIENDS FELLOWSHIP COUNCIL \$4,774.49

## PEACE SECTION

Institute of International Relations	\$51,314.23	
Student Peace Service	18,894.59	
Other Activities	29,475.58	
		\$99,684.40

## SOCIAL INDUSTRIAL SECTION

Contribution by American Friends Ser- vice Committee	\$12,000.00	
Coal Areas Committee	5,272.00	
Friends Health Service	1,431.52	
National Committee on Maternal Health	1,975.00	
The Young Fellowship	992.00	
Summer Work Camps	18,113.09	
Other Receipts	3,267.00	
	\$43,050.61	
Less: Loss on Securities	2,231.95	
		\$40,818.66

## FRIENDS SERVICE, INCORPORATED

Penn-Craft Project Contributions	\$15,815.00	
Penn-Craft Operating Receipts (Except Farm)	5,964.07	
	\$21,779.07	
Redstone Knitting Mill—Net Sales	24,481.97	
	\$46,261.04	
Drawn from Reserves to meet current year's expense	23,901.82	
		70,162.86

Total Income, Composite Fund \$308,034.05

*Thirty-six*

# STATEMENT OF EXPENSES COMPOSITE FUND

December 31, 1939

## GENERAL FUND

General Administration	\$20,763.95	
Publicity and Finance	10,214.21	
Foreign Service	25,828.71	
Peace Section	16,750.00	
Social Industrial Section	12,000.00	
Fellowship Council	1,075.00	
International Student House	1,600.00	
		\$88,231.87

AMERICAN FRIENDS FELLOWSHIP COUNCIL      \$ 4,773.05

## PEACE SECTION

Deficit for 1938	\$ 6,609.01	
Institutes of International Relations	51,314.23	
Student Peace Service	17,690.49	
Other Activities	21,259.57	
		\$96,873.30

## SOCIAL INDUSTRIAL SECTION

General Administration	\$10,839.94	
Coal Areas Committee	5,371.04	
Friends Health Service	1,441.92	
Maternal Health Clinic	1,948.38	
Summer Work Camps	15,557.48	
The Young Fellowship	917.12	
Summer Volunteers	594.02	
		\$36,669.90

## FRIENDS SERVICE, INCORPORATED

Penn-Craft Project (Except Farm)	\$38,750.34	
Redstone Knitting Mill	31,412.52	
		\$70,162.86

Total Disbursements, Composite Fund	\$296,710.98	
Income in Excess of Expenditure	11,323.07	
		\$308,034.05

*Thirty-seven*

## ANALYSIS OF CONTRIBUTIONS GENERAL FUND

January 1, 1939 to December 31, 1939

### YEARLY MEETINGS

Baltimore—Five Years Meeting	\$ 395.00
Baltimore—General Conference	2,709.21
California—Five Years Meeting	40.75
Illinois—General Conference	25.00
Indiana—Five Years Meeting	407.89
Indiana—General Conference	248.00
Iowa—Conservative	5.25
Iowa—Five Years Meeting	83.00
Kansas—Five Years Meeting	13.00
Nebraska—Five Years Meeting	120.00
Yearly Meeting of Friends for New England	1,210.91
New England—Westerly	1,135.00
New York—Five Years Meeting	3,114.70
New York—General Conference	5,867.60
North Carolina—Five Years Meeting	90.00
Ohio—Conservative	53.00
Oregon—Independent	8.00
Philadelphia—Arch Street	16,668.34
Philadelphia—Race Street	17,132.23
Western—Five Years Meeting	210.78
Wilmington—Five Years Meeting	97.00
Canada—Five Years Meeting	600.00
Genesee Yearly	10.00

### OTHER GROUPS

Cambridge Friends	3,570.00
Cleveland Friends	5.00
Connecticut Valley	58.00
Independent Groups	77.26
Madison Friends Meeting	204.00
Montclair Meeting	250.00
Syracuse United Meeting	90.00
Non-Friends	32,820.41
	\$87,319.33
Other Sources—including Interest, Refunds, Special Income, etc.	5,274.31
	\$92,593.64

*Thirty-eight*

SPANISH CHILD FEEDING MISSION  
of the  
AMERICAN FRIENDS SERVICE COMMITTEE

Statement of Income and Expenses  
Period Ending December 31, 1939

INCOME

Balance January 1, 1939	\$ 3,649.14	
General Contributions	46,134.06	
Committee for Impartial Civilian Relief in Spain	48,528.18	
Church of the Brethren	3,700.00	
Mennonite Relief Committee	3,399.55	
American Red Cross	100.00	
America Spanish Relief Fund	5,500.00	
Sociedades Hispanas Confederadas	3,646.43	
Spanish Child Welfare Association	11,312.23	
Spanish Refugee Relief Campaign	1,085.00	
United Christian Youth Movement	314.72	
Local A. F. S. C. Committees		
Boston Committee	3,302.80	
Bryn Mawr College Committee	302.00	
Chicago Committee	602.10	
Cleveland Committee	381.33	
Schenectady Committee	245.38	
Friends Service Council, London	1,700.00	
Cash Received in Paris	40.30	
Cash Received in Spain	488.60	
Cash Received from Sale of Booklets	26.32	
International Commission	25,573.00	\$160,031.14
<hr/>		
Contributions in Kind		
General	15,020.62	
American Surplus Wheat (through American Red Cross)	329,471.62	
American Junior Red Cross, Puerto Rico Chapter	1,099.25	
Committee on World Friendship	1,716.00	
Mennonite Relief Committee	7,055.85	
Church of the Brethren	7,806.95	362,170.29
		<hr/>
		\$522,201.43

EXPENSES

General Administration	\$ 8,806.98	
General Administration—Committee for Impartial Civilian Relief in Spain	6,799.09	
Publicity and Promotion	1,256.72	
Relief Operations		
Storeroom	\$ 2,761.98	
Field Directors	3,959.19	
Spain	453,140.72	
Refugee Relief in France	11,968.43	
Supplies Purchased on Behalf of the International Commission	17,340.00	
Relief Funds in Transit	834.41	490,004.73
		<hr/>
		\$ 15,333.91

REFUGEE SECTION  
of the  
AMERICAN FRIENDS SERVICE COMMITTEE

Statement of Income and Expenses  
Period Ending December 31, 1939

INCOME

Balance, January 1, 1939	\$	12,942.47
General Contributions		85,350.47
American Christian Committee		12,450.00
American Jewish Joint Distribution Committee		50,000.00
Special Projects:		
Scattergood Hostel	\$	10,712.84
Cuba Training Center		12,072.52
Nyack Vacation Hostel		1,438.50
Mexico Resettlement Project		5.00
		24,228.86
Miscellaneous		146.24
		\$185,118.04

EXPENSES

Administration	\$	16,462.78
Publicity		977.16
Relief and Service		
Services Rendered in America	\$	23,923.93
Relief to Refugees in America		2,919.40
Commissioners to Germany		17,515.30
Relief and Service in Europe		42,366.55
Store Room		637.17
		\$87,362.35
Special Projects:		
Scattergood Hostel	\$	18,279.34
Cuba Training Center		10,225.92
Bryn Mawr Hostel		927.40
Mexico Resettlement Project Initial Travel and Expense		1,661.82
Nyack Vacation Hostel		1,462.03
Language Camp		71.70
		32,628.21
		137,430.50
Balance, December 31, 1939		\$ 47,687.54

# COMMITTEES 1939-40

## SOCIAL-INDUSTRIAL SECTION

Warder Clyde Allee  
E. Wight Bakke  
Orlando T. Battin  
James Baynes  
Herbert Bergstrom  
Georgia Bergstrom  
Anna Naomi Binford  
*ex-officio*  
William C. Biddle  
Betty Bishop  
Phillips Bradley  
J. Howard Branson  
Thomas K. Brown, Jr.  
Margaret P. Bruton  
Edmund G. Burbank  
Ora W. Carrell  
Jessie G. Carter  
Ruth E. Carter  
W. Warner Clark  
Eleanor Stabler Clarke  
Edith S. Coale  
Edwin H. Coggeshall  
Alfred F. Conard  
Dorothy N. Cooper  
Charles J. Darlington  
Alice O. Davis  
David W. Day  
Arthur Dayfoot  
Wayne A. Dockhorn  
Marian S. Dockhorn  
Thomas E. Drake  
Earle J. Edwards, Jr.  
Elizabeth W. R. Elkinton  
Wayland H. Elsbree  
Anna Cope Evans  
Margaret Whitall Evans  
Charles H. Frazier, Jr.  
Paul J. Furnas  
Dr. Frederick R. Griffin  
Edith W. Hall  
Rachel Hartman  
Thomas B. Harvey  
Hannah Clothier Hull  
James D. Hull, Jr.  
William C. Ivins  
Arthur C. Jackson  
Elisabeth A. Jackson  
Elmore Jackson, *ex-officio*

Elizabeth Marsh Jensen  
Christina H. Jones  
Margaret E. Jones  
Mary Hobson Jones  
Olga A. Jones  
Rufus M. Jones, *ex-officio*  
William M. Kantor  
Nicholas Kelley  
Hadley H. Kelsey  
W. Perry Kissick  
Helen Lea  
Lucy Biddle Lewis  
Richard McCoy  
Richard H. McFeely  
James S. Maier  
Jean Warren Malandra  
Ruth Outland Maris  
Margaret E. Matthews  
J. Don Miller  
Richmond P. Miller  
Arthur E. Morgan  
Elizabeth L. Morgan  
Edna W. Morris  
Homer L. Morris, *ex-officio*  
Jane Rhoads Morris  
Warren D. Mullin  
William Newman  
Ray Newton  
Mary Sullivan Patterson  
S. Howard Pennell  
Corwin H. Perisho  
Edith N. Perry  
J. Theodore Peters  
Clarence E. Pickett,  
*ex-officio*  
Lilly P. Pickett  
Florence W. Potts  
Thomas I. Potts  
Edna L. Pressler  
Dudley M. Pruitt  
Alice H. Pusey  
Elizabeth Pusey  
Phebe A. Rahll  
Eleanor S. Regnery  
Henry Regnery  
William H. Regnery  
John F. Rich  
Richard H. Rhoads

Comly B. Richie  
David S. Richie  
Mary W. Richie  
Alice P. Sellers  
Joseph B. Shane  
Martha B. Sharpless  
T. Kite Sharpless  
Daniel N. Shoemaker  
Dorothy W. Shoemaker  
Mary G. Shoemaker  
Joseph R. Silver  
Ward W. Silver  
Ruth Simkin  
William E. Simkin  
Eleanor Slater, *ex-officio*  
Esther Morton Smith  
Irving J. Smith  
Ethel Betty Linton Snyder  
Richmond F. Snyder  
Elizabeth T. Stabler  
Miriam D. Standing  
Eva T. Stanton  
W. Macy Stanton  
Douglas V. Steere  
Frederick W. Swan  
Susan Morton Tatum  
Carl Taylor  
Howard M. Teaf, Jr.  
W. Taylor Thom  
Edward Thomas  
Clarence E. Tobias, Jr.  
A. Curtis Tomlinson  
James A. Wain  
J. Barnard Walton  
Bernard G. Waring,  
*Chairman*  
Grace W. Waring  
D. Herbert Way  
Allen J. White  
Janet Payne Whitney  
Mary A. Wickersham  
James A. Williams  
Theodate P. Wilson  
Hazel O. Wood  
Howard E. Yarnall  
Mildred B. Young  
Wilmer J. Young

## FOREIGN SERVICE SECTION

Martha Balderston  
 Robert W. Balderston  
 William C. Biddle  
 C. Walter Borton, *ex-officio*  
 Rebecca B. Bradbeer  
 Phillips Bradley  
 Margaret P. Bruton  
 Emma Cadbury  
 Henry J. Cadbury  
 Jessie G. Carter  
 Ruth E. Carter  
 Barbara L. Cary  
 C. Reed Cary  
 Mary Goodhue Cary  
 Howard Comfort  
 Elizabeth Comfort  
 Howard W. Cope, *ex-officio*  
 Anna L. Curtis  
 Merle L. Davis, *ex-officio*  
 Ruby Davis  
 Edith Hilles Dewees  
 Susan J. Dewees  
 David C. Elkinton  
 Elizabeth W. R. Elkinton  
 Katherine W. Elkinton  
 Howard W. Elkinton  
 J. Passmore Elkinton  
 William Eves, 3rd, *Chairman*

Frances C. Ferris  
 Robert H. Frazier  
 Eleanor E. Garrett  
 Ruby Haworth  
 Elizabeth L. Hazard  
 Allen H. Hole  
 Helen B. Hole  
 Wilhelm Hubben  
 Hannah Clothier Hull  
 Arthur W. Hummell  
 Elisabeth Averill Jackson  
 Caroline Nicholson Jacob  
 Louisa M. Jacob  
 Marie C. Jenkins  
 Mary Hoxie Jones, *ex-officio*  
 Elizabeth B. Jones, *ex-officio*  
 Rufus M. Jones, *ex-officio*  
 A. Willard Jones  
 Thomas R. Kelly  
 Clark Kerr  
 Hertha Kraus  
 Grace S. Lowry  
 Effie D. McAfee  
 M. Elsie McCoy  
 Albert P. Martin  
 Anne H. Martin  
 Eva M. Newlin  
 Caroline G. Norment

Harvey C. Perry  
 Julianna R. Perry  
 Clarence E. Pickett,  
*ex-officio*  
 Joseph E. Platt  
 William R. Redick  
 Grace E. Rhoads, Jr.  
 John F. Rich  
 Abby Mary Hall Roberts  
 Elizabeth T. Shipley  
 Dorothy M. Steere  
 Douglas V. Steere  
 Louise A. Stinetorf  
 Helen R. Stratton, *ex-officio*  
 Tom A. Sykes  
 Esther E. Thomas  
 Agnes L. Tierney  
 Rebecca S. J. Timbres  
 Wilbur K. Thomas  
 L. Ralston Thomas  
 Marjorie Trump  
 Margaret C. Wagner  
 Miriam D. Wilson  
 John R. Weske  
 Janet Payne Whitney  
 Helene Wittmann  
 Nancy M. Wood  
 Howard E. Yarnall

## REFUGEE SECTION

Emily Green Balch  
 Clement M. Biddle  
 Julia E. Branson  
 Emma Cadbury  
 Barbara L. Cary  
 C. Reed Cary, *ex-officio*  
 Eleanor Stabler Clarke  
 John L. Elliot  
 Evelyn Daetsch, *ex-officio*  
 Gertrude Ely  
 William Eves, 3rd  
 Bliss Forbush  
 Laverne Forbush  
 Hanns Gramm  
 John S. C. Harvey  
 Evelyn Hersey

Hannah Clothier Hull  
 Elisabeth A. Jackson  
 Louisa M. Jacobs  
 Margaret E. Jones  
 Rufus M. Jones  
 Thomas R. Kelly  
 Mary Kelsey  
 Natalie B. Kimber, *ex-officio*  
 Hertha Kraus, *ex-officio*  
 Elizabeth M. Lantz  
 Albert P. Martin  
 Anne H. Martin  
 Josiah P. Marvel  
 Richmond Pearson Miller  
 Florence F. Murphy  
 Clarence E. Pickett  
 Ruth V. Pope, *ex-officio*

Mary M. Rogers, *ex-officio*  
 John F. Rich, *ex-officio*  
 Marjorie P. Shauffler,  
*ex-officio*  
 Leslie D. Shaffer  
 Florence Sanville  
 Karoline Solnitz  
 Irmegard Taylor  
 Annelise Thieman, *ex-officio*  
 Wilbur K. Thomas  
 Jeanette Keim Trumper  
 James G. Vail  
 Anne Willis  
 Elizabeth B. Yarnall  
 D. Robert Yarnall,  
*Chairman*

## COMMITTEE ON POLAND

Alfred G. Scattergood,  
*Chairman*  
 Wilmot R. Jones  
 Rufus M. Jones

Charles J. Rhoads  
 James G. Vail  
 Eleanor Stabler Clarke

Clarence E. Pickett  
 John F. Rich, *ex-officio*  
 Claude C. Smith

## COMMITTEE ON SPAIN

Roswell P. Barnes  
Harold S. Bender  
William C. Biddle  
Eleanor Stabler Clarke,  
*Chairman*  
William Eves, 3rd  
Charles J. Ewald  
Hanns Gramm

Hannah Clothier Hull  
Rufus M. Jones  
Sylvester Jones  
Clement B. Lewis  
Lucy Biddle Lewis  
Phillip Markley  
Orie O. Miller

Mrs. Ross D. Murphy  
Clarence E. Pickett  
Rev. John J. Plenert  
Grace E. Rhoads, Jr.  
John F. Rich, *ex-officio*  
Edith R. Solenberger  
J. Barnard Walton  
Dan West

## PEACE SECTION

J. Maxwell Adams  
A. Ward Applegate  
Emily Green Balch  
James Baynes  
William E. Berry  
Phillips Bradley  
Elwood Brooks  
Bertha L. Broomell  
James Bumgarner  
Sidney Cadwallader  
Harold J. Chance, *ex-officio*  
K. Ashbridge Cheyney  
Roy J. Clampitt  
Helen Cornfield  
Robert H. Dann  
Edith Hilles Dewees  
John W. Dorland  
Rachel Davis DuBois  
Joseph O. Edmonds  
Anna Griscom Elkinton  
Edward W. Evans  
Mary Farquhar  
Clement B. Flitcraft  
Herbert Fraser  
Dilwyn C. Hampton  
Emily B. Harvey  
J. Mahlon Harvey  
Samuel L. Haworth  
John S. Hollister

Leslie Pinckney Hill  
Emma G. Holloway  
Jesse H. Holmes  
Blanche R. Howland  
Hannah Clothier Hull  
Arthur M. Hussey  
Emily Cooper Johnson,  
*Chairman*  
Esther Holmes Jones  
Rufus M. Jones  
Murray S. Kenworthy  
W. Perry Kissick  
Frederick J. Libby  
Caroline Biddle Malin  
Mary Mason  
Mary S. McDowell  
Sumner A. Mills  
Babette Henley Newton  
Ray Newton, *ex-officio*  
Rebecca Carter Nicholson  
Vincent D. Nicholson  
J. Roland Pennock  
Helen S. Pennock  
Florence Williams Potts  
Edna L. Pressler  
William R. Redick  
L. Willard Reynolds  
Mary H. Roberts  
W. Glenn Roberts  
Deborah Robbins

Elbert Russell  
Charlotte Salmon, *ex-officio*  
Pauline E. Satterthwaite  
Roger Scattergood  
George A. Scherer  
Robert S. Schoonmaker  
Louis Schultz  
Edith Reeves Solenberger  
Ethel Betty Linton Snyder  
Harold E. B. Speight  
Sherman H. Stetson  
Mary J. W. Strong  
W. Bruce Siler  
Irving J. Smith  
Guy W. Solt, *ex-officio*  
Miriam D. Standing  
Frederick W. Swan  
Tom A. Sykes  
Arthur K. Taylor  
Wilbur K. Thomas  
Marjorie Trump  
Grace D. Watson  
Janet Payne Whitney  
Mary A. Wickersham  
E. Raymond Wilson,  
*ex-officio*  
Miriam D. Wilson  
John Wood, Jr.  
Richard R. Wood

## FELLOWSHIP COUNCIL

Marjorie Hill Allee  
A. Ward Applegate  
Edith F. Bacon  
Ellis W. Bacon  
Robert W. Balderston  
Lelia Bascom  
William C. Biddle  
Raymond Binford  
Edith S. Blackburn

Anna Cox Brinton  
Howard H. Brinton  
Anna Pettit Broomell  
J. Franklin Brown  
Henry J. Cadbury  
Agnes Calvert  
Ora W. Carrell  
Elizabeth M. Chace  
Harold J. Chance

Alvin T. Coate  
Walter Collins  
C. Wilfrid Conard  
Edith C. Cope  
Homer J. Coppock  
George B. Corwin  
Phyllis Cosand  
Clara I. Cox  
Robert H. Dann

## FELLOWSHIP COUNCIL (Cont'd)

Arthur Dunham  
Horace A. Eaton  
Anna Griscom Elkinton  
J. Passmore Elkinton,  
*Vice-Chairman*  
Errol T. Elliott  
Matilda W. Evans  
O. Herschel Folger  
Bliss Forbush  
Eliza Ambler Foulke  
Alfred C. Garrett  
Eleanor C. Garrett  
W. Ralph Gawthrop  
Willis H. Hall  
Byron Haworth  
Walter G. Heacock  
Burrill M. Hiatt  
Merrill L. Hiatt  
Howard W. Hintz  
Herbert L. Huffman, Jr.  
Rufus M. Jones,  
*Honorary Chairman*  
Thomas R. Kelly,  
*Chairman*

Leonard Kenworthy  
Howard E. Kershner  
David F. Lane  
Albert J. Livezey  
Franklin O. Marshall  
Sarah Maxwell  
Anna Jane Michener  
Elizabeth L. Morgan  
Furman L. Mulford  
Augustus T. Murray  
C. E. Myers  
Edith Newlin  
Eva M. Newlin  
Charles M. Palmer  
C. Mervin Palmer  
S. Emily Parker  
J. Theodore Peters  
Clarence E. Pickett,  
*ex-officio*  
Alexander C. Purdy  
Bertha Randall  
Mary Gaunt Rhoads  
William J. Sayers

George A. Selleck  
Leslie D. Shaffer,  
*ex-officio*  
Beatrice Shipley  
Ward W. Silver  
Ruthanna M. Simms  
Katherine Smedley  
Edgar H. Stranahan  
C. Marshall Taylor  
Anna J. Theiss  
Charles F. Thomas  
Mildred Thomas  
Seal Thompson  
D. Elton Trueblood  
Pauline G. Trueblood  
J. Barnard Walton,  
*Vice-Chairman*  
Charles O. Whitely  
Janet Payne Whitney  
Charlotte Winnemore  
John H. Wood, Sr.  
Walter C. Woodward  
Sue C. Yerkes  
Charles A. Zavitz

## FINANCE COMMITTEE

James Butt  
William R. Fogg  
John S. C. Harvey,  
*Chairman*

J. Robert James  
Rufus M. Jones,  
*ex-officio*  
Hugh W. Moore,  
*ex-officio*

S. Francis Nicholson  
Clarence E. Pickett,  
*ex-officio*

# WORK CAMP MEMBERSHIP—1939

## DELTA WORK CAMP, Rochdale, Miss.

B. F. and ELSIE JACKSON, *Directors*

Balmer, Eleanor C.	Jackson, Fay	Robinson, Margaret I.
Bauman, David B.	Longshore, Dorothy J.	Rohrer, Margaret
DaVitte, Nelle A.	McClanahan, Paul H.	Shown, W. Kyle
Goodenow, Deloras E.	McDaniel, Hardey I.	Stewart, Dale
Himes, Milo D., Jr.	Novick, Louis J.	Trayer, Raymond S.
Holt, William D.	Price, Fred H., Jr.	Wiebe, Evelyn R.
Hotz, Oliver C.	Ramseyer, Edna G.	Wootton, M. Sue

## MACEDONIA WORK CAMP, Clarkesville, Ga.

RAYMOND and CHARLOTTE DENNETT, *Directors*

Baron, Leonard	Grover, Ralph	Mills, Sarah D.
Bettle, Frances B.	Howell, Joseph A.	Reed, James
Bramkamp, Shirley	Jenney, Virginia	Silin, Basha B.
Brooks, Elizabeth L.	Kramer, Milton	Stephens, Peggy
Evans, Jacqueline D.	Longshore, William A.	Tilton, Harriet F.
Fayerweather, Anne	McFetridge, Edward P.	Wiser, Arthur D.
Foster, Nancy W.	McMillen, Archibald M.	Wolf, James
Garfinkel, Harold	McNees, Margaret	

## MICHIGAN WORK CAMP, Flint, Mich.

BURNS and ELIZABETH CHALMERS, *Directors*

Aebischer, Elizabeth D.	Ferry, Dorothea	Ousley, Mary K.
Allen, Thomas G.	Kamm, George N.	Porter, Michael
Beck, George	Kay, John A.	Ringel, Lucille
Bertsch, Margaret E.	Keen, Martha-Anne	Speyer, Ruth
Booz, Donald R.	Knight, Margaret B.	Touhsaent, Wilson E.
Brooks, Arle	Machell, John V.	Vogel, Lucile A.
Dayfoot, Arthur C.	Martin, Nancy G.	Wentworth, Ethel
	Muther, Walter P.	

## MIGRANT WORK CAMP, Shafter, Calif.

JOHN WAY, JR., *Director*

Bell, Helen	Haynes, Helen	Nolte, Rose
Elberston, Don	Kline, Marion	Sadler, C. Boone
Green, Dorothy	Mekkelson, Paul	Siegel, Ruth

## SAN PEDRO WORK CAMP, San Pedro, Calif.

ROBERT and LYRA DANN, *Directors*

Allen, Constance	Garretson, Marydel	Josif, Harold
Balderston, Walter	Guthrie, Stephen	Linsley, Edwin
Flores, Ernestine	Huessy, Hans	Weeks, Donald
Frank, Elisabeth	Jones, Esther	Wills, Eleanor

## PENN-CRAFT WORK CAMP, East Millsboro, Pa.

CLARENCE and MARGARET YARROW, *Directors*

Babbot, Frank L.	Helmholz, Margaret	Page, Theodore S.
Badgley, Selma G.	Holden, B. Roger	Payne, Joan
Barger, Wenona	Hubbard, Mildred deK.	Phillips, Sidney H.
Barstow, Robbins W., Jr.	Jones, Margaret L.	Ritter, George J.
Bell, Edgar D., Jr.	Karcher, E. Kenneth, Jr.	Stark, Alice F.
Boardman, Howard F.	Kleiss, Charlotte A.	Stutts, Maryalice
Botkowski, Margarete	Leone, Rose T.	Swift, David E.
Burton, Estelle H.	Marcuson, Esther	Thiermann, Stephen
Christopherson, Edmund D.	Merrill, Elizabeth W.	Thron, Wolfgang J.
Cook, H. Jane	Moore, Jane L.	Tielke, Homer H.
Dewees, Robert L.	Morgan, Paul W.	Warren, Henry W., II
Ellis, William P.	Nova, Fritz	Wise, Bernice
Evans, Jonathan	Oppliger, Pierre	Wodeman, Richard H.
	Orcutt, Guy H.	Zeigler, S. Howell

## T. V. A. WORK CAMP, Rhea Springs, Tenn.

DONALD and LOIS STEVENSON, *Directors*

Back, Kurt W.	Grosser, George H.	Roberts, Fred M.
Beemer, James G., Jr.	Hoyman, Scott M.	Taylor, Carl B.
Briggs, Barbara S.	Ingersoll, Marion V.	Taylor, Florence A.
Claassen, Walter C.	Jones, Margaret E.	Taylor, Mildred J.
Comstock, Glen M.	Kresin, Clarence E.	Teetor, Paul R.
Cooley, Ruth	Main, Malcolm G.	Thomas, Howard P., Jr.
Crane, John N.	Markowitz, Joseph C.	Thomas, Marielle
Dwinell, Ralph B.	McClelland, M. Carol	Underwood, Anne E.
Ehrenfeld, John	Nobel, Suzanne D.	Wang, Joseph T. F.
Fowler, Kenneth A.	Phillips, Mary G.	Weiskel, Frank M.
Fryling, Glenn R.	Rayman, Mortimer S.	Weiskel, Harriet
Goodman, Herbert J.	Read, Charles R.	White, Mary A.
Goy, G. Otto	Riggs, Charles H., Jr.	Williams, Alice R.
Green, Isabel A.		Wolhandler, Joseph

## PHILADELPHIA SUMMER SERVICE GROUP

Anderson, Zelda R.	Freshwater, Betty A.	Pegram, Pauline K.
Bailenson, Eleanor L.	Gluy, Helen L.	Rochford, Helen E.
Baldwin, Mariellen	Hendrix, Mae E.	Sittler, Lenore
Bennett, Mary Margaret E.	King, Vivian H.	Snyder, Richard L.
Conover, Elizabeth	Laub, Joseph H.	Stearns, Jane A.
Cook, Elizabeth	McCrone, Elizabeth M.	Szapira, Brurish
Cooper, Elizabeth T.	Napper, Evelyn E.	Webb, Gladys E.
Ellis, Mildred K.	Paulson, Maxine	Wells, Hope D.
Etter, Sylvia M.		Wright, Elizabeth

## RAVENSCROFT UNIT

Darlington, Mary	Fayerweather, Margaret	Forbes, Betty V.
Emery, Alvine M.		Switzer, Eleanor N.



*(Representing the Mennonite Relief Committee)*

Levi Hartzler, *Murcia, Jaen*

Wilbur Nafziger, *Jaen, Valencia*

\*Ernest Bennett, *Jaen, Valencia*

\*Lester Hershey, *Jaen*

Clarence Fretz, *Jaen*

*\*Still in Europe—February 1940*

REFUGEE SECTION—Hostel and other field personnel

*New York Office—(Room 1601, 165 W. 46th St., New York,  
N. Y.)*

Louise Clancy

Jean Reynolds

*Scattergood Hostel*

John Kaltenbach, *Acting Director*

Martha Balderston

Walter Stanley, *Supt. of buildings and grounds*

Sarah Stanley

Giles Zimmerman, *Placements*

Ethlyn Zimmerman

Lillian Pemberton

Mildred Holmes

Ruth E. Carter

Camilla Hewson

Earle Edwards

Marjorie Edwards

*Scattergood Hostel Summer Staff*

Albert P. Martin, Anne H. Martin, *Directors*

Leonore Goodenow

Ardith Emmons

Rachel J. Pickett

Marie Jensen

*Cuba Hostel*

Emmett W. Gulley, *Director*

Zoe Gulley

Helen G. Murray

Lowell E. Wright

Frank A. Rice

\*Hertha Kraus

\*Esther Farquhar

*\*For summer only, to organize the hostel.*

*Sky Island Hostel, Nyack, N. Y.*

Elizabeth Cooper  
A. Willard Jones  
Christina H. Jones

*Co-directors*

Eleanor Anglin  
Frank Rice  
Hanna Barschak  
Arthur Burke  
Betty Burke  
Frances Hart Burke  
George Cooper

Manual Costa  
Karl de Schweinitz, Jr.  
Fritz Einstein  
Bertha Goldstein  
John N. Goodridge  
Blanche Griffith  
Charles Griffith  
Paul Griffith  
Richard Jones  
Myrtle R. Kellington  
Helene Sonnenschein

SOCIAL-INDUSTRIAL SECTION

*Penn-Craft*

David W. Day, *Director*  
Olive Day  
Errol D. Peckham  
Mary Peckham  
Henry Regnery  
Eleanor S. Regnery

*Eastern Ohio*

*Shadyside*

Stanley Hamilton  
Marie Hamilton

*Neffs*

Edwards Dickinson  
Marjorie Dickinson

*Friends' Health Center, Logan, West Virginia*

Winifred Wencke

PEACE SECTION

*Institute Secretaries*

Donovan Smucker, *Kansas*  
Helen Binford, *North Carolina*  
George Selleck, *New England*  
Joseph W. Conard, *Mills*  
E. Raymond Wilson, *Grinnell*  
Pauline Ross, *Reed*  
Roy VanDeman, Lydia Michener, *Whittier*  
E. A. Schaal, *Middle Atlantic*

*Field Secretaries, Student Peace Service*

Mary Morrisett  
Robert Burgess  
William Hare  
Olcott Sanders  
Judith Beach

INTERNATIONAL STUDENT HOUSE, Washington, D. C.

Grace W. Lowry, *Director*  
Frances Andrews, *Assistant Director*

CLOTHING COMMITTEE

Eleanor Stabler Clarke, *Chairman*  
Maude M. G. Woodruff, *in charge of the Storeroom*

## **HOLDERS OF FOREIGN FELLOWSHIPS**

GENEVA FELLOWSHIPS FOR TRAVEL IN EUROPE

A. Ward Applegate  
Leslie D. Shaffer  
Philip Jacob  
Joseph W. Conard  
Mary Goodhue Cary

MARY CAMPBELL FELLOWSHIP FOR EUROPEAN STUDY

Morton A. Brown

MARY WILLIAMS FELLOWSHIP for a teacher at the Ramallah  
School, Palestine

Wadi G. Dides

## PEACE VOLUNTEERS—1939

Alter, James  
Anderson, Henrik  
Apra, Daniel  
Beecher, Constance  
Bendsen, Victor  
Bigelman, Rose  
Binford, Frederick  
Brewster, Virginia  
Brinton, William  
Brooks, Charles  
Brown, Dale  
Buckner, Virginia  
Burrill, Bob  
Cahall, Robert  
Calbeck, Margaret  
Carlson, Arnold  
Cavallaro, Nancy  
Claypool, James  
Copeland, Hazel  
Cross, Nancy  
Darlington, LeRoy  
Dennison, Esther  
D'Evelyn, Fred  
Douglas, David  
Drew, Jeanne  
Emrick, Leland  
Exon, C. Stuart  
Felton, Mary  
Fertig, Fred  
Forman, Betty  
Forman, Mary  
Goldberg, Razelle  
Good, Rachel  
Greider, Carolyn  
Hare, William  
Hare, Mrs. William  
(Pauline Ross)  
Hartog, Emma  
Hernandez, Efraim  
Hertz, Richard  
Hunt, Ruth  
Hutchins, Jennings  
Icaza, Natalia  
Janes, Mary  
Johnson, Della  
Keislar, Marvin  
Kinney, Ray  
Kunkel, H. Warren

Lax, Steve  
Lepick, Dorothea  
Littell, Marjorie  
Luttrell, Charlotte  
Manning, Duane  
McKay, Arthur  
Merry, Helen  
Meyer, Frances  
Mills, Theodore  
Moody, Wilberta  
Moody, Winnifred  
Murphree, Idus  
Nelson, Patricia  
Newton, Donald  
O'Banion, Laura  
Pancoast, J. Wilmer  
Pelz, Donald  
Peters, Mary  
Piper, Dorothy  
Prickitt, Henry  
Riddle, Eleanor  
Ridgway, Phyllis  
Ring, Maxine  
Root, Dayton  
Roraback, Catherine  
Scanlan, Alice  
Scheuer, James  
Scott, Albert  
Sheffler, Marjorie  
Shoemaker, Daniel  
Sleezer, Patricia  
Smith, Leona  
Snyder, George  
Solenberger, Robert  
Stout, Alice  
Strauss, Joseph  
Subotnik, Ruth  
Sullivan, John  
Swanson, Neil  
Swift, Charles  
Thomson, Anne  
Tipton, George  
Trumbull, Mary  
Warnshuis, Joan  
Whittlesey, Stephen  
Winslow, Allen  
Wood, Philip  
Wylie, Martha

## INFORMATION AND LITERATURE

THE American Friends Service Committee is an incorporated body under the laws of the State of Pennsylvania. It represents most of the twenty-nine American Yearly Meetings of Friends. The organization consists of the Social-Industrial Section, Foreign Service Section, Peace Section, Fellowship Council, Committee on Spain, Refugee Section, and Finance Committee. Each of these is under the supervision of an advisory committee, and functions through the Service Committee's Board of Directors and Executive Staff.

---

Information and Literature concerning the work of the American Friends Service Committee may be secured through the following:

### New England Branch Office

GEORGE SELLECK, *Secretary*, 5 Longfellow Park, Cambridge, Massachusetts.

### Chicago Branch Office

JEANETTE F. STETSON, *Secretary*, 615 S. Maple Avenue, Oak Park, Illinois.

### Friends Central Office

WALTER C. WOODWARD, 101 South Eighth Street, Richmond, Indiana.

### Field Secretary of Peace Section

JOSEPH W. CONARD, Mills College, California.

The Friends Service Council, Friends House, Euston Road, London, N. W. 1, is appointed by London and Dublin Yearly Meetings. In the European fields, the work has been carried on by the Friends Service Council (London) and the American Friends Service Committee.

