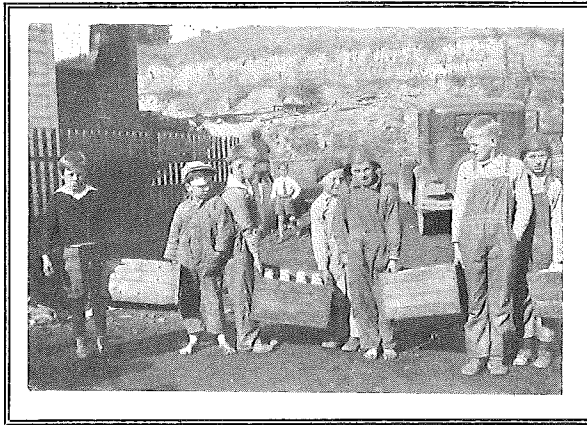


REPORT OF THE  
**CHILD RELIEF WORK**  
IN THE  
**BITUMINOUS COAL FIELDS**



BY THE  
**AMERICAN FRIENDS SERVICE  
COMMITTEE**



SEPTEMBER 1, 1931  
AUGUST 31, 1932

---

---

*Report of the* Child Relief Work  
*in the*  
Bituminous Coal Fields

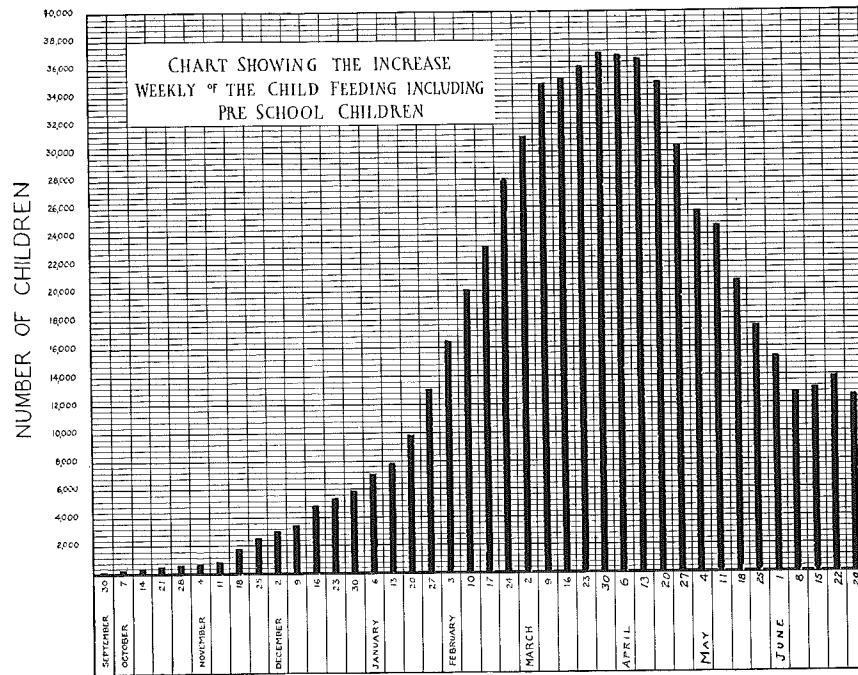
*by the*

AMERICAN FRIENDS SERVICE COMMITTEE

September 1, 1931 . . . August 31, 1932

**D**URING the summer of 1931, representatives of the Federal Children's Bureau and the President's Organization on Unemployment Relief, following a scientific survey of the needs in this field, approached the American Friends Service Committee of Philadelphia requesting them to undertake relief work among the children of unemployed miners in the bituminous coal fields. After very careful consideration, the Committee decided to undertake this service which it has carried on during the past year.

Feeding began the latter part of September, 1931. The peak load was reached in April when 33,227 school children were being furnished one substantial meal a day, and in addition milk was being furnished to 7,697 pre-school children and 1,071 nursing and expectant mothers. Relief was given in 563 communities, divided into ten major districts in 41 Counties located in the States of Pennsylvania, West Virginia, Maryland, Kentucky, Illinois and Tennessee. A field staff of fifty-five men and women workers, mostly volunteers who were paid expenses plus a small allowance, was secured. (A list of the workers and the districts in which they were located is shown elsewhere in this report.)



### WHO RECEIVED THE FOOD

**I**N each case where new districts were opened up, the workers first consulted the County Health officer, school trustees, local doctors, mine operators, school teachers, and in some cases local welfare committees which were already in the field. The proposal of the American Friends Service Committee for child feeding work was explained. In many cases local authorities were loath to admit that distress existed. However, as the winter advanced, the services of the Committee were increasingly sought in meeting the increasing need. As a rule local groups welcomed our workers and helped in every way with investigations and with the preparation for actual feeding. They made every effort to locate places for serving the meals and found people to cook them; they hunted out the best stores and built needed benches and tables. It would not have been possible to carry on the work in these outlying camps, far up in the hills and sometimes reached by incredibly bad roads, without the help and devotion of the local people, especially the teachers, who gave untiringly of their time and strength.

Often the personal services in the way of counseling with people of the community about their neighborhood and domestic difficulties became

one of the functions of our workers. Letters which have come to the office indicate a wide and intensive growth of friendships and the feeling of profound gratitude for the service which has been rendered. Friends gave relief to the needy irrespective of race or affiliations.

### HEALTH CONDITIONS

The decision as to what children should be fed was based, first of all, on the objective standard of 10% underweight. In addition to this, the families in the communities where we gave relief were visited and in many cases children, unable to come to school because of lack of clothing or because of inertia, were discovered. Also problems of health and other deterrents were taken into consideration in deciding upon those who should be fed. Doctors and members of the local health units, where available, frequently were called into service in weighing children and making physical examinations. In many cases, however, this work had to be done by our own workers. Weighing was repeated in the spring, after the feeding stopped. The results were very gratifying. At this time there have been reports from 1312 children. The percentage of gain in weight has been from 2% - 8%. In addition to the gain in weight, school attendance notably increased. The Superintendent of Schools of Mingo County, West Virginia, for instance, reported their attendance this year had increased 10% over last year. Easier discipline, happier dispositions and an amazingly improved ability to concentrate were reported in most schools.

The health examination revealed a wide-spread prevalence of bad tonsils and throats, troublesome teeth, weak eyes and nervous disorders. The Friends enlisted the interest of local doctors in some cases; in others an appeal was made for outside aid, and, as one specific result, fourteen tonsilectomies were performed. A few children were sent to hospitals to be cured of trachoma; one child with infantile paralysis was placed in a home for remedial care.

One incalculable benefit from the work was the start made in teaching the mining communities the value of health and of disease prevention, and an elementary understanding of food values. The happiness of tens of thousands is still being ruined by preventable disease.



CHILD FEEDING AT NORTON, W. VA.



A TYPICAL SEWING GROUP EMPLOYING NEEDY AT CHURCH

## CLOTHING

The children needing food the most were often kept at home for lack of clothing. Some went barefoot; the majority wore canvas shoes with soles so thin that their feet were practically on the ground. One little fellow, six years old, was outfitted one winter morning with the first pair of shoes he ever put on; while many received their first pair of new shoes.

20,194 pairs of new and used shoes were given out during the winter to the children. Over 7,000 pairs of shoes were mended by the idle miners whom our Committee set up as cobblers in various communities, thus not only saving many shoes for further wear, but also giving employment to the parents of the children.

While the request for shoes seemed unlimited, the need for clothing was likewise urgent. Some families were found where the children took turns going out of doors so as to share a common pair of shoes; this even happening in one case with father and son. To meet this need 7,812 pairs of overalls, 5,135 coats, jackets and sweaters, 1,122 boys' shirts; 13,369 suits of underwear; 8,079 pairs of stockings and 1,290 pairs of overshoes were distributed among the children of the various districts. Many hundreds of layettes were sent to the homes for the new born, many of whom would otherwise not even have had a clean dress.

The Clothing Committee could never have accomplished what it did except for the deep interest which inspired 2,000 helpers outside the mine fields to collect clothing, sew and knit during the past winter for our miner friends.

Besides the finished clothing sent to the field, the Clothing Committee supplies materials to sixty sewing groups located in as many mine valleys, where 1500 miners' wives and daughters made dresses, shirts, underwear, quilts and re-fashioned used garments, under the guidance of the Friends' workers.

It is estimated that shoes and clothing to the value of \$50,798 were delivered in the field. This required the double handling—in Philadelphia and in the mountains—of fifty-one tons of clothes. Material supplies to the various sewing groups accounted for an additional \$2,500.

## ADULT RELIEF

Since the original fund of \$225,000 was granted exclusively for the children, the relief worker had no means for caring for distress among the parents. The people themselves knew the need of the children should come first, yet it was hard to see the adults neglected. (Local and national relief could by no means reach all of these families.) Appeals were sent out to meet this demand and many generous, sympathetic people made it possible to care for the most desperate cases. To avoid "old clothes psychology," where possible work was required of the miners and their wives in return for food and clothing. Women were organized to sew and to remodel clothing. One district had over 300 women enrolled in eleven classes; another had 700. All came to count the days between meetings, since it often offered their only recreation.

## RECREATION

It was found that coal camps usually have a most barren social life. Women living in the same street at times would not know or speak to each other. There were no community gatherings except the church, and there the unstable emotionalism of the Holy Rollers often created dissensions rather than fed sociability.

Sewing groups brought these women together. They discovered that there was enjoyment to be had from working with their hands in friendly company. In some isolated camps women were known to have walked seven miles to attend a sewing circle. The children were formed into health clubs and groups of Girl Scouts. Older girls were taught how to make dresses for themselves. The idle boys and men responded with eagerness to the chance to do cobbling and carpentry, leaving no shadow of doubt that an opportunity to work is the soundest benefit the mine people could be given.

## GARDENS

Everyone in the coal fields realized during the late winter that the planting of vegetable gardens alone could prevent distress from increasing very rapidly during the summer. Therefore, early in the spring, the major thought in the work of the relief workers was to stir everybody to grow his own food.

The Friends' workers co-operated with all the agricultural extension groups, the American Red Cross and the local operators in listing the requirements for seed. In many cases they provided seeds where they could not have been procured in other ways. One district was furnished a carload of seed potatoes, which represented one-half the seed potatoes planted this year in that County. The miners recognized the need for gardens, as did the mine owners and the communities. As a result it is estimated there are more gardens in the soft coal fields than ever before. These gardens have helped in a large measure to provide food for this summer and the early winter.

## REHABILITATION

The distress of the soft coal miners is desperate, and grows progressively worse as their industry sinks further into economic chaos. This poses two distinct problems:

- (1) how to keep the miners from present starvation;
- (2) how to find other work for those surplus miners whom the declining industry can never again employ.

Although nothing comes above the claims of present suffering, the possibilities of future distress among unneeded miners is so grave that the two problems form one unavoidable reality. Every one of the field workers recognized this early in the days of organizing the feeding program and began to look ahead to the tremendous issue of salvaging surplus miners from an intolerable situation.

The case is this: There are half a million Ameri-



A MINER FAMILY

can soft coal miners, distributed among more than twenty producing States. The greatest concentration of miners, and the greatest distress, is in those six States where the Friends' activities lay last winter. Here are some 300,000 miners. At least 100,000 of them are not needed in the pits, since greater efficiency in coal combustion, plus the inroads of rival fuels, have permanently decreased the national requirements for coal. It is necessary to visualize the fact that those 100,000 extra workers live in a mountainous country where it is difficult to raise enough food for them and where there are very few

other industries to give them work. Including the families of unneeded miners, there are—in the Appalachian coal fields alone—more than half a million persons with practically no means of livelihood.

This is a widely recognized national problem. Various economic complications make an easy solution of it out of the question. Nevertheless, there are several simple lines of action which promise to aid the people greatly in the fundamental matters of maintaining life and keeping up courage. The following three lines of action are believed practical, and the last two of them have been tested by Friends on a small scale:

### *First—*

To help some families move from the coal regions and settle as subsistence farmers on better farm lands than can be found in the hills. Many miners were farmers before the War time boom in coal, and now wish to return to the land. The prime difficulty with this particular scheme is the need of money to carry it out.

### *Second—*

The development of one farmer-miner combination by which a miner lives on a small farm near the mine, owns his cow, pigs and chickens and raises enough to feed his family. This would leave him free time in which to accept what days of work



A NEW SUPPLY OF CLOTHES AT CROWN MINE

the mine can give him. The income from his part-time mining would give the family cash with which to buy clothes and other necessities. Under such a plan the miner would not be a burden to the State or to the mine, and his partial independence of the mine would strengthen his morale.

*Third—*

The creation of wood-lot and handicraft industries, such as carpentry and cabinet work, chair making, weaving, quilt making, wrought iron work and kindred home industries. Last winter the Friends founded several such handicraft work shops, notably around Morgantown, West Virginia.

It is hoped that the Friends will not have to relinquish the hopeful beginnings made in rehabilitation thought and action. The problem, on both its moral and its economic sides, epitomizes what is most disturbing to American life today.

### WIDE COOPERATION GIVEN

It would be impossible to speak in terms of too high appreciation of the consistent help given to the work of the Committee by the officials and staff of the President's Committee on Unemployment Relief, by the members of the staff of the Children's Bureau—two of whom were loaned to us for considerable periods of time and functioned as members of our staff, by State and County officials, the wide-spread interest and helpfulness of State Departments of Public Welfare, members of the staff of the National Red Cross and of its local chapters, County health and social



CHAIRS FROM CROWN MINE MADE UNDER THE SUPERVISION OF "BUD" GOODLOVE, A NATIVE MOUNTAINEER OF WEST VIRGINIA



TABLES AND STOOL MADE BY THE MINERS IN SHOPS LOCATED AT BERTHA, NEAR MORGANTOWN

service workers, coal operators, many interested citizens, school teachers and also a large number of men and women in the coal camps themselves who assisted in preparing the places for feeding and in cooking and serving the food. Assistance in securing clothing and funds have also been given by a large number of people to whom we wish to express our gratitude. 1,947 contributions were received from individuals and groups located in many communities over the United States. Of these 1,672 came through the Federal Council of the Churches of Christ in America. We wish especially to mention the services of the Federal Council of the Churches of Christ in America. Through their official approval of the work and the services of their secretarial staff, large amounts of clothing and considerable funds were raised. Also a number of denominational social service secretaries have given invaluable assistance, including the Congregational, Unitarian, Episcopal, Methodist, Baptist, Jew and others. The religious papers of practically all denominations have carried appeals and publicity.

Out of the year's experience has come an intensified feeling that the problem presented by the bituminous coal fields is one which affects us all and is to be shared by us all.

The following statistical report gives in more detail the tonal picture of this undertaking:

SUMMARY OF RELIEF FEEDING SCHEDULE — SOFT COAL FIELDS

*Under Supervision and Direction of*

AMERICAN FRIENDS SERVICE COMMITTEE

PHILADELPHIA, P. A.

State	Counties Involved	Schools	Children in School on Relief	% Children in School on Relief to School Enrollment	Meals Served			Receiving Rations			Rations Served			REMARKS
					School	Enrollment	Enrollment	Pre-School Children	Expectant Mothers	Nursing and	Pre-School Children	Expectant Mothers	Nursing and	
Pennsylvania	5	66	3,852	32.7	158,809	None	None	None	None	None	None	None	The food listed below was given after the regular school program ceased.	
West Virginia	17	377	15,223	32.9	1,129,613	3,280	300	223,567	12,863	27,218 lbs. powdered milk distributed to pre-school children.	16,616 qts. fresh milk distributed to pre-school children.	4,798 lbs. powdered milk distributed to school children.	694 lbs. powdered milk distributed to nursing and expectant mothers.	5,668 qts. fresh milk distributed to nursing and expectant mothers.
Kentucky	13	191	11,384	40.5	708,560	3,953	580	373,118	75,459	596 lbs. powdered milk and fresh milk were distributed after school closing to pre-school children.				
Illinois	3	28	1,298	18.4	83,011	46	75	4,299	5,208					
Tennessee	2	18	962	35.9	58,772	277	116	32,828	13,180					
Maryland	1	9	395	40.9	29,915	141	None	7,596	None					
	41	689	33,114		2,168,680	7,697	1,071	641,408	106,710					

AMERICAN FRIENDS SERVICE COMMITTEE

20 South Twelfth Street, Philadelphia, Penna.

COAL RELIEF SECTION

*Statement of Receipts and Expenses*

SEPTEMBER 1, 1931 — AUGUST 31, 1932

RECEIPTS

	Cash	Contributions in Kind	Total
American Relief Administration	\$225,000.00		\$225,000.00
Summer Milk Fund	30,000.00		30,000.00
Friends	5,675.74		5,675.74
Non-Friends	58,136.92		58,136.92
Interest on Deposits	562.45		562.45
Contributions in Kind		\$75,227.19	75,227.19
Total Receipts	\$319,375.11	\$75,227.19	\$394,602.30

EXPENSES

General Administration	\$18,316.09		\$18,316.09
Publicity	8,237.89		8,237.89
Field Director	5,677.32		5,677.32
Child Relief	272,621.67	42,702.71	315,324.38
Adult Relief	10,809.87	32,524.48	43,334.35
Rehabilitation	2,814.53		2,814.53
Total Expenses	\$318,477.37	\$75,227.19	\$393,704.56
Balance	\$897.74		\$897.74

We have audited the books of account of the Coal Relief Section of the American Friends Service Committee and hereby certify that the above shows the Receipts and Expenses.

Respectfully submitted,

GEORGE SCHECTMAN,  
*Certified Public Accountant,*  
 925 LaFayette Building, Fifth and Chestnut  
 Philadelphia, Pa.

September 23, 1932.

AMERICAN FRIENDS SERVICE COMMITTEE

*Officers*

RUFUS M. JONES, *Honorary Chairman*

HENRY J. CADBURY <i>Chairman</i>	W. O. MENDENHALL <i>Vice-Chairman</i>
HENRY TATNALL BROWN <i>Vice-Chairman</i>	CLARENCE E. PICKETT <i>Executive Secretary</i>
HANNAH CLOTHIER HULL <i>Vice-Chairman</i>	WILLIAM R. FOGG <i>Treasurer</i>

*Board of Directors*

HENRY J. CADBURY	RUFUS M. JONES	WILLIAM EVES, 3RD
HANNAH CLOTHIER HULL	WILLIAM C. BIDDLE	VINCENT D. NICHOLSON
HENRY TATNALL BROWN	LUCY BIDDLE LEWIS	DOUGLAS V. STEERE
W. O. MENDENHALL	JOHN S. C. HARVEY	ANNA B. GRISCOM
CLARENCE E. PICKETT	HOWARD CAREY	ERNEST N. VOTAW
WILLIAM R. FOGG	HOWARD W. ELKINTON	

*Co-opted*

WALTER C. WOODWARD	J. BARNARD WALTON	RUTH BIDDLE PENFIELD
WILLIAM B. HARVEY	ELIZABETH MARSH	HANNS GRAMM

COAL EXECUTIVE RELIEF COMMITTEE

HENRY TATNALL BROWN, *Chairman*

WILLIAM C. BIDDLE	HENRY J. CADBURY	ELEANOR STABLER CLARKE
CLARENCE E. PICKETT		BERNARD G. WARING

BERNARD G. WARING, *Director*

HOMER L. MORRIS, <i>Field Director</i>	S. HOWARD PENNELL, <i>Rehabilitation</i>
MALCOLM ROSS, <i>Publicity</i>	WRAY B. HOFFMAN, <i>Records</i>

COAL RELIEF COMMITTEE

HENRY TATNALL BROWN, *Chairman*

WILLIAM C. BIDDLE	LESLIE O. HEATH	RICHMOND P. MILLER
ELEANOR STABLER CLARKE	W. TAYLOR THOM	GRACE E. RHOADS, JR.
HERBERT F. FRASER	PATRICK M. MALIN	BERNARD G. WARING
EDITH W. HALL	LUCY BIDDLE LEWIS	JOSEPH H. WILLITTS

COAL AREAS RELIEF

*In cooperation with*

Federal Council of the Churches of Christ in America

105 East 22nd Street, New York

OLIVE VAN HORN, *Treasurer*

JAMES MYERS, *Secretary*

CLOTHING COMMITTEE

ELEANOR S. CLARKE, <i>Chairman</i>	MARY S. PATTERSON, <i>Assistant Chairman</i>
LILLY P. PICKETT	REBECCA C. NICHOLSON
KATHERINE S. MARIS	MAUDE C. WOODRUFF
	ANNA S. WILLIAMS
	REBA CAMP HODGE

FIELD PERSONNEL

Dist. 1-A, Morgantown, W. Va. . . . Alice O. Davis, Director, Brighton, Mass.  
Elliston P. Morris, Philadelphia, Pa.  
Daniel Houghton, Lansdowne, Pa.  
Edith T. Maul, Riverton, N. J.  
Eleanor Hofman, Morgantown, W. Va.  
William E. and Ruth Simkin, *Rehabilitation*, N. Y.

Dist. 1-B, Uniontown, Pa. . . . Winnifred Way Wencke, Director, Indianapolis, Ind.  
Florence Houghton, Lansdowne, Pa.  
Donald Graham, Darby, Pa.  
Kathleen C. Calkins, Evansville, Wis.  
Edward Heighinian, Baltimore, Md.

Dist. II, Charleston, W. Va. . . . \*Janet Battey, Director, Haverford, Pa.  
\*Mr. and Mrs. Marvin R. Schafer, Directors, Tacoma, Wash.  
Almy C. Grant, Haverford, Pa.  
Ethel Bedford, Oskaloosa, Iowa.  
Charles Suplee, 3rd, Lansdowne, Pa.

Dist. III, Logan, W. Va. . . . W. Glenn Roberts, Director, Brooklyn, N. Y.  
James Stein, Philadelphia, Pa.  
Edith Blackburn, Baltimore, Md.  
Virginia Hollister, Columbus, Ohio.

\*Indicates change of Directors due to the first Director being unable to stay in field longer.



FIELD PERSONNEL

- Dist. IV, Williamson, W. Va. . . . . Mary Kelsey, Director, Philadelphia, Pa.  
Margaret Paxson, Swarthmore, Pa.  
Esther Fisher Smith, Jr., Germantown, Philadelphia, Pa.  
Charles Tatum, Radnor, Pa.  
Wilbur Robbins, Richmond, Ind.
- Dist. V-A, Harlan, Ky. . . . . \*Anna J. Haines, Director, Moorestown, N. J.  
\*Wilmer J. and Mildred Young, Directors, Westtown, Pa.  
Mary Cook, Brooklyn, N. Y.  
Paul Hund, Philadelphia, Pa.
- Dist. V-B, Pineville, Ky. . . . . \*Anna J. Haines, Director, Moorestown, N. J.  
\*Wilmer J. and Mildred Young, Directors, Westtown, Pa.  
Helen Walker, McIntyre, Georgia.  
George M. Trimble, Jr., Parkesburg, Pa.
- Dist. V-C, La Follette, Tenn. . . . . \*Anna J. Haines, Director, Moorestown, N. J.  
Maude Irene Evans, Asst. Director, Hampton, Va.  
\*Wilmer J. and Mildred Young, Directors, Westtown, Pa.  
Willard Webster, Westtown, Pa.  
Ruth Louise Parker, Brooklyn, N. Y.
- Dist. VI-A, Hazard, Ky. . . . . Arthur and Aida Gamble, Directors, Whiteburg, Ky.  
Clyde Syze, Bolton, Mass.  
Edith Lindley, Elizabethtown, Ind.
- Dist. VI-B, Prestonburg, Ky. . . . . George Latta Barrus, Director, Rochester, N. Y.  
Anna C. Levis, Baltimore, Md.
- Dist. VII-A, Greenville, Ky. . . . . Rowland D. White, Director, Whittier, Calif.  
Ruth Joslin, Cornwall-on-Hudson, N. Y.
- Dist. VII-B, Madisonville, Ky. . . . . Ambrose Meyers, Asst. Dir., W. Warwick, R. I.  
Sylvia Thomas, Des Moines, Iowa.
- Dist. VIII, Herrin, Ill. . . . . Wilfred V. Jones, Director, Chicago, Ill.  
Letha Schmitter, Richland, Iowa.  
Milford Mott, Earlham, Iowa.
- Dist. IX, Wheeling, W. Va. . . . . Laura J. Hoyle, Director, Cambridge, Ohio.  
Leonard George, Jet, Okla.
- Dist. X, Ebensburg, Pa. . . . . Errol D. Peckham, Director, Caldwell, Idaho.  
Howard W. Sayles, Belmont, Mass.  
Elmyra Olsen Davis, Pittsburgh, Pa.

\*Indicates change of Directors due to the first Director being unable to stay in field longer.

# Relief Feeding Schedules

SOFT COAL FIELDS

*under the supervision and direction  
of the*

AMERICAN FRIENDS SERVICE  
COMMITTEE

20 South Twelfth Street, Philadelphia, Penna.

●

PENNSYLVANIA  
WEST VIRGINIA  
KENTUCKY  
ILLINOIS  
TENNESSEE  
MARYLAND

●

WINTER 1931-1932

# WEST VIRGINIA

## BARBOUR COUNTY

### American Friends Service Committee—District No. 1

Alice O. Davis, District Director

No.	Schools	School Enrollment	Children on Relief in School	Relief Feeding		Number Days Meals Served	Total Number Meals Served
				Started	Stopped		
1	Galloway	200	110	12-28-31	4-14-32	77	6,640
2	Bear Mountain	104	100	1- 1-32	5-28-32	141	7,497
3	Berryburg, No. 1	14	14	1- 7-32	4-19-32	72	825
4	Dartmoor	70	65	1-18-32	5-28-32	88	4,942
5	Century, No. 1	106	80	2- 2-32	4-21-32	65	2,913
6	Century, No. 2	56	45	2- 2-32	4-14-32	61	6,531
7	Brownton	17	17	2- 2-32	4-21-32	76	1,345
8	Junior, No. 1	130	108	1-18-32	4-14-32	60	2,453
9	Berryburg, No. 2	50	42	"	4-19-32	58	2,054
10	Junior, No. 2	66	58	2- 9-32	4-21-32	50	2,851
11	Meridan	39	36	2-10-32	4-14-32	47	1,658
		852	675				39,709

% school children on relief to school enrollment: 79.2%.

Total meals served: 39,709.

Pre-school children receiving rations: 58.

Nursing and expectant mothers receiving rations: 16.

Total rations served to pre-school children previous 5-21-32: 1,828.

Powdered milk served to pre-school children after 5-21-32: 3,196 lbs.

Fresh milk served to pre-school children after 5-21-32: 67 qts.

Total full feeding to school children after 5-21-32: 2,569.

Total rations to nursing and expectant mothers previous 5-21-32: 734.

MINERAL COUNTY

American Friends Service Committee—District No. 1

Alice O. Davis, District Director

No.	Schools	School Enrollment	Children on Relief in School	Relief Feeding		Number Days Meals Served	Total Number Meals Served
				Started	Stopped		
1	Blaine	48	24	1-21-32	4-28-32	72	1,704
2	Shaw	50	30	2- 7-32	5- 5-32	63	1,606
3	Elk Garden	180	101	"	5-19-32	75	8,094
4	Nethken	58	22	"	4-21-32	54	1,214
5	Emoryville	38	22	"	"	54	1,158
6	Gleason	35	14	2-22-32	3-31-32	30	500
7	Oakmont	41	27	2- 7-32	4-28-32	59	1,617
		450	240				15,893

% school children on relief to school enrollment: 53.3%.

Total meals served: 15,893.

Pre-school children receiving rations: 104.

Nursing and expectant mothers receiving rations: 36.

Total rations served to pre-school children previous 5-21-32: 7,602.

Powdered milk served to pre-school children after 5-21-32: 3,397 lbs.

Total rations served to nursing and expectant mothers previous 5-21-32: 2,292.

Powdered milk served to nursing and expectant mothers after 5-21-32: 204 lbs.

MARION COUNTY

American Friends Service Committee—District No. 1

Alice O. Davis, District Director

No.	Schools	School Enrollment	Children on Relief in School	Relief Feeding		Number Days Meals Served	Total Number Meals Served
				Started	Stopped		
1	Annabelle (white)	79	43	1-30-32	4-29-32	63	2,486
2	Annabelle (colored)	21	21	1-31-32	4-29-32	66	1,198
3	Baxter (white)	190	64	2- 1-32	4-21-32	58	3,854
4	Baxter (colored)	24	12	2- 8-32	4-23-32	56	551
5	Barracksville	233	52	2- 1-32	5-28-32	83	6,082
6	Barracksville (colored)	47	22	2-10-32	"	77	1,562
7	Bethlehem	42	24	2- 2-32	4-26-32	59	1,612
8	Benjamin	52	37	2- 8-32	4-25-32	59	2,283
9	Carolina	208	25	2- 1-32	4-22-32	58	2,135
10	Chesapeake	23	14	1-31-32	5-28-32	80	980
11	Chesapeake (colored)	19	10	2- 1-32	"	80	1,284
12	City Point	42	31	2- 8-32	4-29-32	60	1,982
13	Chatham	53	45	2-19-32	"	49	1,817
14	Chatham (colored)	51	40	2- 2-32	"	62	2,488
15	Dakota	95	57	2- 1-32	"	64	3,833
16	Dunbar	493	50	2- 8-32	5-28-32	80	3,950
17	Everson	82	27	2- 2-32	4-29-32	62	1,667
18	Festus	25	20	2- 1-32	4-29-32	61	973
19	Fleming	360	52	3- 6-32	4- 8-32	25	1,040
20	Grays Flat	112	88	2- 8-32	4-21-32	56	4,075
21	Hill	206	15	2- 8-32	4-29-32	59	1,031
22	Hoult	112	88	3- 8-32	4-22-32	55	1,524
23	Hutchinson	80	46	"	4-29-32	60	2,401
24	James Fork	145	123	2- 3-32	4-29-32	62	6,385
25	James Fork (colored)	28	28	2-22-32	"	49	1,104
26	Koons Run	61	35	2-10-32	4-22-32	53	2,946
27	Kilarm	16	16	2-12-32	4-24-32	52	831
28	Miller	900	26	3- 6-32	4- 1-32	20	546
29	Montana	74	22	2-22-32	4-29-32	46	1,000
30	Montana (colored)	10	8	2-22-32	"	50	389
31	Morris	24	7	2- 1-32	4-22-32	55	317
32	Monongah ?	281	150	"	4-29-32	63	10,145
33	Monongah Parochial	200	60	"	5-28-32	84	5,353
34	Monongah (colored)	16	15	3- 7-32	4-22-32	35	450
35	Morgan Mines	59	33	2- 8-32	"	58	1,562
36	Pharoahs Run	71	49	2- 1-32	4-29-32	54	2,262
37	Pharoahs Run (colored)	40	40	2-10-32	4-22-32	38	1,643
38	Rachael	183	133	2- 2-32	5- 8-32	62	8,772
39	Rivesville	330	90	2- 1-32	4-29-32	55	6,736
40	Rivesville Junior High	230	20	2- 3-32	5-28-32	70	1,496
41	Sugar Lane	29	21	2-10-32	4-29-32	49	1,071
42	St. Peters	320	30	2-11-32	5-28-32	72	1,949
43	Thoburn	301	150	2- 1-32	4-29-32	58	8,061
44	Thoburn (colored)	40	38	2- 9-32	"	48	1,660
45	Thompson	60	50	2-10-32	4-22-32	48	2,257
46	Watson	250	168	2- 7-32	4-29-32	55	7,987
47	Watson (colored)	17	17	2- 4-32	4-22-32	50	640
48	Worthington	126	21	2-10-32	4-29-32	46	986

MARION COUNTY—Continued

No.	Schools	School Enrollment	Children on Relief in School	Relief Feeding		Number Days Meals Served	Total Number Meals Served
				Started	Stopped		
49	Catawba	98	20	2-11-32	3- 5-32	16	222
50	Farmington	246	83		"	20	1,516
51	South Farmington	22	19	2- 2-32	2-12-32	8	138
52	Grantown ?	330	180	2-10-32	3- 5-32	18	2,152
53	Jayenne	235	10	2- 3-32	3- 5-32	22	605
54	Hammond	60	16	2- 8-32	3-19-32	30	503
55	Hill, No. 3	60	16	2- 8-32	"	25	406
56	Kingsmont		54*	2-11-32	3-19-32	17	815
57	Pleasant Valley	138	30	2- 7-32	3- 5-32	10	298
58	Union	66	16	2-10-32	3- 5-32	7	112
59	Hite			4- 1-32	4-22-32	11	363
60	Hutchinson (colored)	12	12	4-22-32	4-29-32	5	60
		7,727	2,689				134,546

% school children on relief to school enrollment: 34.8%. \* Not included.  
 Total meals served: 134,546.  
 Pre-school children receiving rations: 376.  
 Nursing and expectant mothers receiving rations: 36.  
 Total rations served to pre-school children previous 5-21-32: 13,340.  
 Total rations served to pre-school children after 5-21-32 and to 6-18-32: 4,156.  
 Total powdered milk served to pre-school children after 5-21-32: 7,963 lbs.  
 Total fresh milk served to pre-school children after 6-18-32: 2,568 qts.  
 Total rations served to nursing and expectant mothers previous to 5-21-32: 1,832.  
 Total powdered milk served to nursing and expectant mothers after 5-21-32: 153 lbs.  
 Total fresh milk served to nursing and expectant mothers after 5-21-32: 964 qts.

MONONGALIA COUNTY

American Friends Service Committee—District No. 1

Alice O. Davis, District Director

No.	Schools	School Enrollment	Children on Relief in School	Relief Feeding		Number Days Meals Served	Total Number Meals Served
				Started	Stopped		
1	Maidsville	184	132	10- 5-31	6- 4-32	198	23,239
2	Old Maidsville	45	30	1- 3-32	5- 5-32	78	2,041
3	Rosedale	34	28	11-18-31	5- 5-32	132	3,565
4	Bertha, No. 1	35	28	10-22-31	5- 5-32	155	3,126
5	Bertha, No. 2	200	100	10-22-31	"	162	12,979
6	Chaplin	21	16	12- 1-31	"	99	1,590
7	Pursglove, No. 1	94	64	10-28-31	"	139	8,238
8	Pursglove, No. 2	127	54	11-30-31	"	136	5,648
9	Stumptown	114	44	12- 1-32	6- 4-32	146	5,419
10	Jere	176	83	10-15-31	5- 5-32	167	13,292
11	Cassville, No. 1	51	40	11-12-31	"	109	3,787
12	Cassville, No. 2	253	53	1- 7-32	"	80	3,907
13	Hilltop	45	45	10- 6-32	4-29-32	174	5,686
14	Harmony Grove	65	20	1- 5-32	"	77	1,365
15	Osgood	34	24	10-26-31	"	116	2,108
16	Laurel Flat	87	50	10-22-31	"	114	5,098
17	Crown		55*	10-16-31	"	231	16,197
18	Brady	71	44	2-22-32	"	50	1,914
19	Waitman Barbe	181	34	2-14-32	"	55	1,626
20	White Avenue	120	16	2-22-32	6- 4-32	64	1,019
21	Riverside	300	50	"	4-29-32	50	2,500
22	Cheat Canyon	69	12	2-12-32	5- 5-32	60	720
23	Rock Forge	37	24	11-18-31	6- 4-32	124	2,652
24	Beechwood	32	32	2-17-32	4-29-32	30	976
		2,375	1,078				128,692

% school children on relief to school enrollment: 45.6%. \* Not included.  
 Total meals served: 128,692.  
 Pre-school children receiving rations: 953.  
 Nursing and expectant mothers receiving rations: 98.  
 Total rations served pre-school children previous 5-21-32: 65,139.  
 Powdered milk served pre-school children after 5-21-32: 8,184 lbs.  
 Fresh milk served pre-school children after 5-21-32: 1,755 qts.  
 Total meals served to school children after 6-18-32: 3,247.  
 Powdered milk served to school children after 6-18-32: 4,798 lbs.  
 Total rations served to nursing and expectant mothers previous 5-21-32: 6,951.  
 Fresh milk served to nursing and expectant mothers after 5-21-32 to 7-15-32: 2,023 qts.

PRESTON COUNTY

American Friends Service Committee—District No. 1

Alice O. Davis, District Director

No.	Schools	School Enrollment	Children on Relief in School	Relief Feeding		Number Days Meals Served	Total Number Meals Served
				Started	Stopped		
1	Keldow .....	51	51	1-23-32	4-15-32	57	2,608
2	Nordick .....	40	38	"	4-1-32	57	1,675
3	Corinth .....		50*	3-27-32	4-1-32	5	250
		91	139				4,533

% school children on relief to school enrollment: 97.8%. \* Not included.  
 Total meals served: 4,533.  
 Pre-school children receiving rations: 2.  
 Nursing and expectant mothers receiving rations: 2.  
 Total rations served to pre-school children, nursing and expectant mothers: 229.

RANDOLPH COUNTY

American Friends Service Committee—District No. 1

Alice O. Davis, District Director

No.	Schools	School Enrollment	Children on Relief in School	Relief Feeding		Number Days Meals Served	Total Number Meals Served
				Started	Stopped		
1	Norton .....	192	192	1-25-32	4-16-32	60	11,714
2	Coalton .....	238	171	"	"	60	10,066
3	Mabie .....	45	20	"	"	60	1,390
4	Harding .....	58	58	"	"	60	3,422
5	Fairhope .....	32	32	"	"	60	1,747
6	Fairview .....	18	18	"	"	60	1,084
7	Rowan .....	27	13	"	"	58	639
8	Harrison .....	9	9	"	"	60	509
9	King Summit .....	15	15	1-30-32	"	60	823
		634	528				31,394

% school children on relief to school enrollment: 83.3%.  
 Total meals served: 31,394.  
 Pre-school children receiving rations: 204.  
 Nursing and expectant mothers receiving rations: 81.  
 Total rations served to pre-school children previous 5-21-32: 14,468.  
 Powdered milk served to pre-school children after 5-21-32: 4,144 lbs.  
 Fresh milk served to pre-school children after 5-21-32: 11,372 qts.  
 Total rations served to nursing and expectant mothers previous 5-21-32: 5,467.  
 Powdered milk served to nursing and expectant mothers after 5-21-32: 325 lbs.  
 Fresh milk served to nursing and expectant mothers after 5-21-32: 2,576 qts.

TAYLOR COUNTY

American Friends Service Committee—District No. 1

Alice O. Davis, District Director

No.	Schools	School Enrollment	Children on Relief in School	Relief Feeding		Number Days Meals Served	Total Number Meals Served
				Started	Stopped		
1	College Hill .....	153	70	1-11-32	4-21-32	76	5,138
2	Fleming Central .....	101	35	"	"	74	2,551
3	Rosemont .....	220	55	"	"	74	3,414
		474	160				11,103

% school children on relief to school enrollment: 33.7%.  
 Total meals served: 11,103.  
 Total rations served pre-school children, nursing and expectant mothers: None.

TUCKER COUNTY

American Friends Service Committee—District No. 1

Alice O. Davis, District Director

No.	Schools	School Enrollment	Children on Relief in School	Relief Feeding		Number Days Meals Served	Total Number Meals Served
				Started	Stopped		
1	Pierce Public .....	250	45	1-31-32	5-20-32	75	3,155
2	Ben Bush .....	73	32	"	"	73	2,363
3	Davis .....	525	71	"	5-26-32	57	3,892
4	Thomas Central .....	180	24	2-22-32	"	63	1,563
		1,028	172				10,973

% school children on relief to school enrollment: 16.7%.  
 Total meals served: 10,973.  
 Pre-school children receiving rations: 50.  
 Nursing and expectant mothers receiving rations: 5.  
 Total rations served to pre-school children previous 5-21-32: 3,591.  
 Powdered milk served to pre-school children after 5-21-32: 394 lbs.  
 Fresh milk served to pre-school children after 5-21-32: 854 qts.  
 Total rations served to nursing and expectant mothers previous 5-21-32: 250.  
 Powdered milk served to nursing and expectant mothers after 5-21-32: 12 lbs.  
 Fresh milk served to nursing and expectant mothers after 5-21-32: 105 qts.

FAYETTE COUNTY  
American Friends Service Committee—District No. 2

Marvin R. Schafer, District Director

No.	Schools	School Enrollment	Children on Relief in School	Relief Feeding			Pre-School Children	Nursing and Expectant Mothers
				Started	Stopped	Total Number Days Meals Served		
1	Sun (white)	176	71	1-16-32	4-22-32	69	1,350	
2	Sun (colored)	85	25	"	"	69	1,600	
3	Mt. Hope	1,100	60	1-25-32	"	65	1,925	
4	Carbondale	65	25	1-26-32	3-25-32	39	530	
5	Glen Jean	350	36	"	4-15-32	59	1,671	
6	Herberton	85	36	1-27-32	4-22-32	61	180	
7	Du Bois	300	50	2- 2-32	"	59	1,100	
8	Longacre	76	36	"	4- 8-32	34	900	
9	Scarboro	430	48	2-15-32	4-22-32	71	318	
10	Summerlee	35	9	3-13-32	4-15-32	16	10	
11	Boamer	97	28	3-20-32	4-22-32	11	355	
12	Lochgelly	140	30	"	"	25	150	
13	Connelton						110	
		2,939	454				8,983	
							31,431	

% school children on relief to school enrollment: 15.4%.

Total meals served: 31,431.

Pre-school children receiving rations: 103.

Nursing and expectant mothers receiving rations: None.

Total rations served to pre-school, nursing and expectant mothers: 8,983.

RALEIGH COUNTY  
American Friends Service Committee—District No. 2

Marvin R. Schafer, District Director

No.	Schools	School Enrollment	Children on Relief in School	Relief Feeding		Number Days Meals Served	Total Number Meals Served
				Started	Stopped		
1	Hazey		24	3-13-32	4-15-32	25	600
2	Emerson		28	3- 5-32	"	30	840
3	Edmigh		24	3-11-32	4-22-32	25	1,000
			76				2,440

% school children on relief to school enrollment: Not complete.  
Total meals served: 2,440.  
Total rations to pre-school, nursing and expectant mothers: None.

KANAWHA COUNTY  
American Friends Service Committee—District No. 2

Marvin R. Schafer, District Director

No.	Schools	School Enrollment	Children on Relief in School	Relief Feeding			Pre-School Children	Nursing and Expectant Mothers
				Started	Stopped	Total Number Meals Served		
1	Standard	74	74	9-28-31	4-22-32	136	2,350	
2	Ward	300	170	"	"	159	1,620	
3	Ward (colored)	60	24	10-22-31	"	131	1,177	
4	Wet Branch	96	72	10-20-31	"	143	3,840	
5	Dry Branch	106	50	11-16-31	"	115	3,500	
6	Gallagher	173	60	12-1-31	"	108	1,830	
7	Giles	62	62	11-3-31	"	103	6,606	
8	Simmons Creek	57	36	12-9-31	"	95	3,454	
9	Crown Hill	120	25	12-10-31	"	97	4,670	2,880
10	Ilimi (Coal Fork)	70	36	1-7-32	"	81	3,485	2,945
12	Sharon	176	24	1-8-32	"	75	4,534	1,555
13	Monarch	22	22	1-20-32	"	72	2,596	1,885
14	Middle Fork		20*	1-25-32	"	67	1,493	400
15	Blakely		60*	1-28-32	"	56	1,344	
16	Wells Hollow		20*	"	"	61	3,485	
17	Ronda	120	40	1-29-32	"	63	1,163	3,690
18	Red Narrow (white)	18	18	2-25-32	"	46	3,561	
19	Red Narrow (colored)	26	26	"	"	50	900	
20	Livingston (colored)	18	18	2-22-32	"	46	1,111	270
		1,498	757				124,306	27,842

% school children on relief to school enrollment: 43.9%. \* Not included.

Total meals served: 124,306.

Pre-school children receiving rations: 437.

Nursing and expectant mothers: None.

Total rations served to pre-school children, nursing and expectant mothers: 27,842.

BOONE COUNTY  
American Friends Service Committee—District No. 3

W. Glenn Roberts, District Director

No.	Schools	School Enrollment	Children on Relief in School	Relief Feeding			Pre-School Children	Nursing and Expectant Mothers
				Started	Stopped	Total Number Meals Served		
1	Laurel City	106	60	3-21-32	4-6-32	13	792	
2	Ottawa (not a school)		20*	"	4-26-32	27	660	
3	Comfort	300	120	"	4-8-32	15	1,680	
4	Argos		24*	3-13-32	4-22-32	"	600	
5	Keith		16*	"	"	"	400	
6	Birchtan		40*	"	"	"	1,000	
		406	280				5,132	

% school children on relief to school enrollment: 44.3%. \* Not included.

Total meals served: 5,132.

Total rations served to pre-school children, nursing and expectant mothers: None.

LOGAN COUNTY  
American Friends Service Committee—District No. 3

W. Glenn Roberts, District Director

No.	Schools	School Enrollment	Children on Relief in School	Relief Feeding			Pre-School Children	Nursing and Expectant Mothers
				Started	Stopped	Total Number Days Meals Served		
1	Accoville	210	90	11- 5-31	4-26-32	115	1,385	
2	Three Forks	38	38	11-10-31	"	112		
3	Kitchen	26	26	11-12-31	4-15-32	105	1,295	
4	Thompson	60	35	11-18-31	4-28-32	107		
5	Curry	135	55	11-19-31	"	111	423	
6	Amherstdale	330	100	11-19-31	4-26-32	111		
7	Sunbeam	160	95	11-23-31	4-28-32	104		
8	Mt. Gay	384	150	12- 1-31	"	98	122	
9	J. B. Ellis	160	80	12-14-31	"	104		
10	Chauncey	110	62	"	"	95	1,392	
11	Emmett (white)	51	51	"	4-26-32	95	1,830	
12	Greenville	106	70	"	"	90	1,848	
13	Braeholm (white)	190	80	12-18-31	"	91	294	
14	Kistler	150	48	12-22-31	"	84		
15	Stone Branch	48	40	1- 5-32	4-15-32	74	1,135	
16	Coal Branch (white)	83	44	1-14-32	4-28-32	74	1,191	
17	Coal Branch (colored)	300	25	"	"	75		
18	Aracoma (white)	86	25	"	"	74	938	
19	Aracoma (colored)	80	9	"	"	75	330	
20	Whitman Junction	100	31	"	"	74		
21	Whitman Junction (colored)	33	20	"	"	61		
22	Whitman Mann	60	51	2- 2-32	"	74	188	
23	Slagle	150	60	1-15-32	"	73		
24	Yolyn (white)	100	57	1-18-32	"	72	49	
25	Yolyn (colored)	88	40	1-21-32	"	69		
26	Emmett (colored)	17	15	1-18-32	"	72	677	
27	Cora (colored)	23	23	1-19-32	"	72		

28	Orville	69	23	1-27-32	"	65		
29	Holden-Dunbar	171	75	1-25-32	4-27-32	67	1,495	
30	Toney Fork	30	40	1-28-32	4-15-32	53	5,025	
31	Crites	100	30	2- 1-32	4-26-32	61	1,399	
32	Justice	136	35	1-25-32	4-28-32	67	2,084	
33	Omar (white)	443	56	2- 1-32	"	63	2,345	
34	Omar (colored)	102	35	"	"	63	3,761	168
35	Logan Central	394	20	"	"	63	2,257	
36	Barnabas	96	35	2-15-32	"	63	1,200	
37	Braeholm (colored)	79	30	"	"	52	1,516	
38	Lundale (white)	175	67	2-16-32	4-26-32	52	1,397	
39	Peach Creek (white)	120	40	2-15-32	"	51	3,489	
40	Peach Creek (colored)	30	14	"	4-28-32	52	2,080	
41	Hughey	75	24	"	"	52	737	
42	Ethel (white)	307	25	"	"	52	1,161	175
43	Ethel (colored)	56	20	2-29-32	"	52	1,300	
44	Earling	17	17	2-16-32	4-26-32	42	933	
45	Dempsey Branch	67	48	2-22-32	4-28-32	48	823	
46	Crooked Creek	37	33	"	"	47	2,272	762
47	Blair	106	18	"	"	47	1,125	
48	Clothier (white)	54	20	"	"	48	874	
49	Clothier (colored)	33	5	"	"	48	758	
50	Mifflin	25	1	"	"	47	245	
51	Monclo (white)	232	7	"	"	47	47	
52	Monclo (colored)	30	6	"	"	48	336	
53	Hicks	32	3	"	"	48	288	
54	Spankman	25	25	2-29-32	4-26-32	42	144	
55	Switzer	90	45	3-10-32	4-28-32	34	876	66
56	Stirratt (colored)	88	27	"	"	34	1,495	
57	Crystal Block (colored)	29	21	"	"	34	967	
58	Monaville	269	163	"	"	34	835	
59	Silush	31	25	3-14-32	4- 4-32	14	5,423	
60	Taplin	115	60	3-16-32	4-26-32	30	329	
61	McConnell						1,754	
		6,941	2,513				172,640	14,271

% school children on relief to school enrollment : 36.2%. Pre-school children receiving rations : 259.  
Total meals served : 172,640. Nursing and expectant mothers : None.  
Total rations served to pre-school children, nursing and expectant mothers : 14,271.



MINGO COUNTY  
American Friends Service Committee—District No. 4

Mary Kelsey, District Director

No.	Schools	School Enrollment	Children on Relief in School	Started	Stopped	Relief Feeding		Pre-School Children	Nursing and Expectant Mothers
						Days Meals Served	Total Number Meals Served		
1	Chatteroy	600	193	11-16-31	4-8-32	95	16,598	5,304	
2	Chatteroy (colored)	68	29	11-17-31	6-1-32	133	3,703	28	
3	Borderland	485	31	"	"	142	3,967	819	21
4	Nolan	269	120	11-16-31	"	130	13,814	4,998	14
5	Burch							5,615	
6	(Delbarton)	286	120	11-18-31	5-20-32	134	13,480	1,000	
7	Landstreet (white)	184	60	"	4-15-32	100	5,737	698	
8	Lick Creek	22	12	"	6-1-32	141	1,507	538	14
9	Rawl	48	32	"	"	140	3,669	126	
10	Merrimac	48	14	11-17-31	4-15-32	102	1,435	114	
11	Merrimac (colored)	17	17	11-18-31	4-22-32	105	1,254	453	
12	Gates	71	30	11-14-31	6-1-32	140	3,193		
13	Gates (colored)	42	28	"	"	141	2,928	690	
14	Goodman	68	25	"	"	132	3,163	1,604	
15	Sprigg	175	42	11-18-31	5-18-32	116	3,835	915	
16	Pigeon Roost	62	39	11-24-31	4-22-32	99	3,386	541	
17	Lower Elk	40	18	"	6-1-32	140	1,793	840	
18	Upper Elk	56	17	"	"	138	1,821		
19	Buffalo	11	10	11-23-31	4-15-32	100	947	2,096	12
20	William Ann	42	42	11-23-31	6-1-32	138	4,977	483	
21	Landstreet (colored)	36	36	11-24-31	"	117	3,605		
22	Turner (colored)	10	10	"	3-25-32	80	692		
23	Chafin	75	23	"	3-8-32	72	1,605	4,407	24
24	Duty	70	45	"	6-5-32	144	4,335	2,588	
	White	90	50	"	6-1-32	139	5,655	710	

25	Cinderilla	74	28	11-23-31	4-22-32	100	2,448	288	
26	Cinderilla (colored)	43	30	"	"	98	2,884		
27	Matewan		42	11-30-31	4-15-32	92	3,415	812	14
28	Red Jacket	350	61	"	4-18-32	94	4,364	21	
29	Red Jacket (colored)	106	18	"	4-20-32	93	1,674	205	
30	North Matewan	97	37	12-7-31	4-18-32	87	2,703	105	
31	New Town	103	23	"	"	89	1,325	14	
32	Meador	48	7	"	4-15-32	87	609		
33	Beech Creek	142	20	"	4-18-32	90	1,800		
34	Lynn	44	20	"	4-13-32	85	1,604		
35	Caney	56	40	11-30-31	4-15-32	95	3,607	696	
36	Vulcan	100	12	12-7-31	4-22-32	91	1,092		
37	Vulcan (colored)	27	8	"	"	92	736		
38	Devon	28	7	12-7-31	4-19-32	86	528		
39	New Howard	27	11	"	4-18-32	88	996		
40	Thacker	169	20	"	4-15-32	87	1,740		
41	Pigeon Creek	208	60	"	4-19-32	88	5,422	341	
42	Delorme	76	28	"	4-18-32	89	1,754	854	
43	New Thacker		20	"	"	88	1,710	175	
44	Thacker (colored)	17	14	"	4-19-32	87	1,028	30	
45	Tamcliffe	45	40	12-21-31	4-8-32	74	2,653	2,054	
46	Maher		30	"	"	77	2,080	765	
47	E. Kermit	60	8	"	4-22-32	88	605		
48	Rhode Branch	52	40	1-4-32	4-8-32	70	2,466	141	
49	U. War Eagle	79	60	1-11-32	5-6-32	85	4,740	432	
50	L. War Eagle	50	40	"	6-1-32	110	3,842	46	
51	Lenore	105	40	1-18-32	4-8-32	59	2,370	180	
52	Double Lick	13	7	1-20-32	4-22-32	68	476		
53	Winifred Block								
54	Rose	22	6	1-20-32	4-22-32	71	437	357	14
55	Forks Marrowbone	90	17	"	4-8-32	58	970	583	
56	Shiloh		8	1-25-32	3-25-32	45	384	185	
57	Naugatuck		31	1-4-32	4-15-32	69	2,068	210	
58	Little Dove	74	30	"	"	69	1,757	447	
59	Myrtle		35	"	"	69	2,390	378	
60	Riffes Branch	25	18	"	"	70	1,057		
61	Canterbury		45	"	"	70	2,987		
62	Middle-Burning	26	7	1-11-31	"	70	460	120	

MINGO COUNTY—Continued

No.	Schools	School Enrollment	Children on Relief in School	Started	Stopped	Relief Feeding Number Days Meals Served	Total Number Meals Served	Pre-School Children	Nursing and Expectant Mothers
63	Glen Alum	27	40	"	"	69	2,573		
64	Glen Alum (colored)	55	13	2-15-32	4-22-32	50	637	41	
65	Verner	55	40	1-28-32	5-6-32	70	2,764	40	
66	Devil's Den Branch	52	16	1-25-32	3-25-32	45	715	150	
67	Hardy	26	50	2-1-32	6-1-32	100	3,804	560	
68	Big Laurel	72	12	2-22-32	4-22-32	35	333	4	
69	Gilbert		43	4-25-32	6-1-32	36	1,408	1,102	
70	Dillon		7	2-15-32	4-15-32	45	390	2	
71	Mary Martha							1,113	
		5,472	2,232				192,921	46,361	113

% school children on relief to school enrollment: 40.8%.  
Total meals served: 192,921.

Pre-school children receiving rations: 511.

Nursing and expectant mothers receiving rations: 9.

Total rations served to pre-school children, nursing and expectant mothers: 46,474.

MCDOWELL COUNTY

American Friends Service Committee—District No. 4

Mary Kelsey, District Director

No.	Schools	School Enrollment	Children on Relief in School	Started	Stopped	Relief Feeding Number Days Meals Served	Total Number Meals Served	Pre-School Children	Nursing and Expectant Mothers
1	N. Fork (white)	166	19	2-1-32	5-28-32	88	1,528		
2	N. Fork (colored)	172	45	2-8-32	"	88	2,292		
3	Elridge	185	50	"	"	79	4,340		
4	Algona	62	15	"	"	79	1,253		
5	Rolfe (colored)	89	24	2-1-32	"	84	1,992		
6	Rolfe (white)	182	20	"	"	84	1,961		
7	McDowell (colored)	93	25	"	"	84	1,975		
8	McDowell (white)	161	20	2-8-32	"	84	1,560		
9	Ashland (colored)	78	20	3-14-32	"	54	1,060		
10	Ashland (white)	147	30	2-1-32	"	84	2,170		
11	Maybeury (colored)	210	60	"	"	84	4,410		
12	Maybeury (white)	285	60	"	"	84	4,710	5	
13	Crumpler (colored)	24	15	"	"	84	1,245		
14	Crumpler (white)	286	60	"	"	84	3,958		
15	Elkhorn Hi.	331	20	"	4-30-32	60	1,300		
16	Switchback	171	46	"	5-14-32	66	3,036		
17	Elkhorn (white)	282	20	"	5-28-32	94	1,680		
18	Elkhorn Dist. Hi.	331	20	"	"				
19	Elkhorn (colored)	268	50	"	"				
20	Powhatan	72	28	"	"				
21	Havaco (white)	164	40	2-8-32	"				
22	Havaco (colored)	24	8	"	"				
23	Millcreek	45	20	"	"				
24	Wilcoe	150	30	"	"				
25	Wilcoe (colored)	73	20	"	"				



BROOKE AND OHIO COUNTIES  
American Friends Service Committee—District No. 9

Laura J. Hoyle, District Director

No.	Schools	School Enrollment	Children on Relief in School	Relief Feeding			Pre-School Children	Nursing and Expectant Mothers	
				Started	Stopped	Total Number Meals Served			
1	Triadelphia	354	175	1-7-32	5-21-32	101	8,623	925	
2	Elm Grove	640	104	1-18-32	"	88	7,024		
3	S. Warwood	275	77	1-27-32	5-20-32	95	5,728		
4	Dunbar	68	64	1-10-32	5-24-32	93	4,997		
5	Scott's Run	60	58	2-2-32	"	76	4,365	310	
6	McKinleyville (white)	162	68	2-9-32	"	65	3,853		
7	McKinleyville (colored)	25	25	"	"	73	1,763	9	
8	Louise (white)	92	81	2-2-32	"	71	3,796	1,277	
9	Louise (colored)	32	32	"	"	70	2,220	587	
10	Collier (white)	215	50	"	"	77	3,389		
11	Collier (colored)	14	14	"	"	66	1,153	85	
12	Roney's Point	56	33	1-7-32	5-21-32	88	3,084	27	
13	Kruger	415	27	1-18-32	"	88	2,120		
14	N. Warwood	466	22	2-1-32	5-20-32	54	1,069		
15	South Bridge	130	36	1-18-32	5-21-32	88	2,608		
		3,004	866				59,871	11,622	1,224

% school children on relief to school enrollment: 28.8%.

Total meals served: 59,871.

Pre-school children receiving rations: 178.

Nursing and expectant mothers receiving rations: 17.

Total rations served to pre-school, nursing and expectant mothers: 12,846.

## KENTUCKY

MARTIN COUNTY  
American Friends Service Committee—District No. 4

Mary Kelsey, District Director

No.	Schools	School Enrollment	Children on Relief in School	Relief Feeding			Pre-School Children	Nursing and Expectant Mothers	
				Started	Stopped	Total Number Meals Served			
1	Beauty	138	42	2-15-32	3-18-32	25	1,007		
2	Warfield	153	53	"	5-31-32	72	3,528		
3	Long Branch	44	44	2-22-32	6-1-32	100	3,897		
4	Earlston	*	47	"	6-4-32	94	3,603		
5	Pigeon Shoals	35	21	"	5-31-32	96	1,968		
6	Inez	*	2	3-21-32	4-1-32	11	22		
		370	209				14,025		

% school children on relief to school enrollment: 43.2%. \* Not included.

Total meals served: 14,025.

Total rations served to pre-school children, nursing and expectant mothers: None.

PIKE COUNTY  
American Friends Service Committee—District No. 4

Mary Kelsey, District Director

No.	Schools	School Enroll-ment	Children on Relief in School	Relief Feeding			Pre-School Children	Nursing and Expectant Mothers
				Started	Stopped	Number Days Meals Served		
1	Pikeville (Northside) (colored)	76	30	1-14-32	5-12-32	87		
2	Cumberland	375	80	1-19-32	5-20-32	89		2,458
3	E. Elkhorn	23	20	"	3-17-32	44		3,670
4	Hellier	450	113	1-0-32	5-20-32	87		8,874
5	Allegheny	50	20	"	5-5-32	78		1,260
6	Lookout	250	80	"	5-11-32	82		6,454
7	Virgie	335	115	1-18-32	4-22-32	70		7,965
8	Dorton	350	72	"	5-12-32	80		2,280
9	Sharondale	130	30	"	4-14-32	65		1,950
10	Belfry (grade)	500	140	"	3-25-32	50		6,967
11	Freeburne	175	144	"	"	80		6,280
12	Majestic	267	70	"	5-5-32	80		5,450
13	Elwood	31	20	1-26-32	"	74		1,480
14	Hardy	260	104	"	5-11-32	78		8,112
15	McVeigh	560	165	"	5-20-32	84		11,368
16	McVeigh (colored)	42	30	3-6-32	5-5-32	45		1,350
17	Stone	500	70	4-18-32	"	15		1,050
18	Orinoco							
19	Elkins							
20	Toler							
21	Manco							
		3,924	1,303					77,845

% school children on relief to school enrollment: 33.2%.

Total meals served: 77,845.

Total rations served to pre-school children, nursing and expectant mothers: 43,117.

Pre-school children receiving rations: 694.

Nursing and expectant mothers receiving rations: None.

BELL COUNTY  
American Friends Service Committee—District No. 5-B

Anna J. Haines, District Director

No.	Schools	School Enroll-ment	Children on Relief in School	Relief Feeding			Pre-School Children	Nursing and Expectant Mothers
				Started	Stopped	Number Days Meals Served		
1	Old Straight Creek (white)	112	90	1-25-32	7-8-32	124		2,240
2	Edgewood	112	60	1-26-32	7-15-32	109		1,827
3	Monarch	40	35	"	7-8-32	119		637
4	Jensen	97	45	2-1-32	7-15-32	116		609
5	Bosworth	112	50	"	7-1-32	110		602
6	Old Straight Creek (colored)	5	5	2-8-32	7-15-32	115		840
7	Dean	75	40	2-15-32	7-8-32	105		2,177
8	Capito	76	60	2-16-32	"	104		504
9	Balkan	375	175	2-17-32	7-1-32	98		1,135
10	Mathel	145	56	2-17-32	7-15-32	108		3,493
11	Varilla	33	33	2-24-32	"	103		2,377
12	Melden	70	50	2-24-32	7-8-32	98		3,557
13	Bryson	120	45	3-9-32	4-29-32	37		1,834
14	Boardtree	46	24	3-16-32	7-1-32	78		1,427
15	Blanche	150	115	3-15-32	7-15-32	88		9,215
16	Hosman	40	40	5-16-32	7-15-32	45		1,569
17	Reliance	120	46	5-2-32	7-15-32	55		1,361
		1,728	969					67,687

% school children on relief to school enrollment: 56%.

Total meals served: 67,687.

Pre-school children receiving rations: 531.

Nursing and expectant mothers receiving rations: 115.

Total rations served to pre-school, nursing and expectant mothers: 82,050

HARLAN COUNTY  
American Friends Service Committee—District No. 5-A

Anna J. Haines, District Director

No.	Schools	School Enrollment	Children on Relief in School	Relief Feeding		Pre-School Children	Nursing and Expectant Mothers
				Number Days Meals Served	Total Number Meals Served		
1	Cawood	224	75	11-12-31	168	2,493	749
2	Wilsonberger	120	100	11-17-31	157	4,772	1,709
3	Wallins	555	140	11-23-31	163	5,950	
4	White Star	76	60	7-1-32	158	5,732	2,275
5	Shields	207	80	12-3-31	152	9,808	1,886
6	Draper	76	76	12-15-31	149	1,972	770
7	Elcomb	200	140	12-16-31	138	2,335	1,330
8	Cumberland	750	250	12-28-31	75	17,686	
9	Black Joe	70	36	12-31-31	137	4,564	
10	Everts	445	220	1-14-32	124	19,990	
11	Red Bud	58	26	1-25-32	70	1,820	
12	Shields (colored)	26	26	2-10-32	101	2,426	
13	Cotes	45	45	2-24-32	83	3,310	
14	Ages	160	100	2-25-32	57	5,983	
15	Kentonia	120	31	3-14-32	90	2,466	
		3,132	1,405		139,681	36,658	10,336

% school children on relief to school enrollment: 44.8%.

Total meals served: 139,681.

Pre-school children receiving rations: 263.

Nursing and expectant mothers receiving rations: 69.

Total rations served to pre-school children, nursing and expectant mothers: 46,994.

BREATHITT COUNTY  
American Friends Service Committee—District No. 6-B

Arthur Gamble, District Director

No.	Schools	School Enrollment	Children on Relief in School	Relief Feeding		Pre-School Children	Nursing and Expectant Mothers
				Number Days Meals Served	Total Number Meals Served		
1	Barwick	20	20	3-21-32	50	947	102

% school children on relief to school enrollment: 100%.

Total meals served: 1,045.

Total rations served to pre-school, nursing and expectant mothers: 1,049.

Pre-school children receiving rations: 17.

Nursing and expectant mothers receiving rations: 2.

JOHNSON COUNTY  
American Friends Service Committee—District No. 6-B

Arthur Gamble, District Director

No.	Schools	School Enrollment	Children on Relief in School	Relief Feeding		Pre-School Children	Nursing and Expectant Mothers
				Number Days Meals Served	Total Number Meals Served		
1	Thealka	210	70	2-29-32	49	1,890	54
2	Offutt	90	86	3-9-32	83	7,112	1,396
3	Whitehouse	98	36	3-18-32	45	1,067	521
4	Paintsville	1,125	71	3-24-32	43	2,400	
5	Hammond	70	60	3-28-32	51	2,156	458
		1,593	323		14,625	8,153	2,429

% school children on relief to school enrollment: 20.3%.

Total meals served: 14,625.

Total rations served to pre-school, nursing and expectant mothers: 10,582.

Pre-school children receiving rations: 129.

Nursing and expectant mothers receiving rations: 43.

FLOYD COUNTY  
American Friends Service Committee—District No. 6-B  
Arthur Gamble, District Director

No.	Schools	School Enrollment	Children on Relief in School	Relief Feeding		Pre-School Children	Nursing and Expectant Mothers
				Number Days Meals Served	Total Number Meals Served		
1	Garrett	648	200	81	10,788	1,936	200
2	Eureka	75	33	130	3,488	3,036	642
3	Glo	120	82	65	3,193	1,810	65
4	Lackey	318	166	64	9,128	3,391	302
5	Estell	114	69	128	7,516	6,627	946
6	Betsy Lane	432	139	87	11,193	2,077	425
7	Wayland (white)	264	70	39	2,711	119	141
8	E. Prestonburg	425	69	77	3,737	3,604	141
9	W. Prestonburg	110	52	85	3,949	1,636	501
10	Wayland (colored)	42	28	8	224	176	56
11	Auxier	276	74	72	5,057	1,509	785
12	Bosco	131	46	67	2,231	1,666	212
13	Emma	115	85	83	5,456	2,145	212
14	Bull Creek	121	84	57	3,535	2,010	360
15	McDowell	298	90	43	3,951	971	210
16	Steel Creek	80	36	78	3,327	348	108
17	Shop Fork	38	28	23	704	987	280
18	Stephens Branch	200	40	52	2,473	126	362
19	Drift	220	89	53	3,176	1,122	218
20	Ligon	171	85	44	3,108	2,455	106
21	Burton	200	80	50	4,261	1,799	57
22	Buckingham	131	70	59	1,817	919	56
23	Tram	50	45	53	2,195	240	168
24	Garth	54	40	34	1,288	799	
25	Allen	175	60	52	2,124		
26	Winchester			51	2,977	1,063	127
27	Melvin	175	68	21	2,000	538	106
28	Harold	175	50	47	935	629	347
29	Driewood	73	22			1,088	189
30	Martin					873	
31	Duvalle						
		5,331	1,600		106,542	45,699	6,967

26	Winchester			51	2,977	1,063	127
27	Melvin	175	68	21	2,000	538	106
28	Harold	175	50	47	935	629	347
29	Driewood	73	22			1,088	189
30	Martin					873	
31	Duvalle						
		5,331	1,600		106,542	45,699	6,967

% school children on relief to school enrollment: 30%.

Total meals served: 106,542

Pre-school children receiving rations: 781.

Nursing and expectant mothers receiving rations: 193.

Total rations served to pre-school children, nursing and expectant mothers: 52,666.

LETCHER COUNTY

American Friends Service Committee—District No. 6-A

Arthur Gamble, District Director

No.	Schools	School Enrollment	Children on Relief in School	Relief Feeding			Pre-School Children	Nursing and Expectant Mothers
				Started	Stopped	Total Number Meals Served		
1	Sergeant	129	94	12-8-31	7-30-32	172	3,825	1,056
2	Elsie Coal	134	45	12-10-31	5-1-32	48	13,239	3,987
3	Hemphill	244	150	12-7-31	7-30-32	161	15,780	4,117
4	Whitco	60	60	"	"	167	10,794	4,171
5	Fleming	360	112	12-14-31	"	156	17,339	1,444
6	Haymouth I	234	120	12-21-31	"	150	11,080	2,424
7	Haymouth I (colored)	101	33	"	"	164	11,577	1,442
8	Seco	300	145	1-11-32	"	164	4,664	1,119
9	Millstone	160	105	"	"	159	12,744	180
10	Marlowe	135	75	1-18-32	"	153	540	108
11	Kona	190	85	2-1-32	"	144	210	
12	Belcroft	*	17*	6-13-32	"	36		
13	Apex	*	5*	"	"	42		
		2,047	1,046				83,924	21,406

% school children on relief to school enrollment: 50.5%. \* Not included.

Total meals served: 102,560.

Pre-school children receiving rations: 583.

Nursing and expectant mothers receiving rations: 143.

Total rations served to pre-school children, nursing and expectant mothers: 104,330.

PERRY COUNTY

American Friends Service Committee—District No. 6-A

Arthur Gamble, District Director

No.	Schools	School Enrollment	Children on Relief in School	Relief Feeding			Pre-School Children	Nursing and Expectant Mothers
				Started	Stopped	Total Number Meals Served		
1	Dudley	360	112	12-23-31	6-11-32	111	3,498	100
2	Bonniman	275	96	1-14-32	"	107	10,185	1,043
3	Bluegrass	100	56	1-11-32	7-30-32	145	3,454	3,021
4	Happy Hill	120	70	1-18-32	"	153	4,426	1,312
5	Defiance	182	85	1-26-32	"	142	6,221	588
6	Glomaur	250	86	2-2-32	"	131	1,806	340
7	Kodak	236	100	2-8-32	6-11-32	91	3,240	1,266
8	Blue Diamond	180	180	2-9-32	7-30-32	131	6,960	536
9	Ky. Block	42	35	3-4-32	6-11-32	71	3,702	536
10	Buffalo	115	52	"	"	55	5,020	536
11	Lothair	396	172	3-1-32	5-18-32	71	7,056	1,052
12	Hardhurly	294	101	3-10-32	7-30-32	95	5,888	1,422
13	Kenmont	240	72	3-2-32	"	117	4,924	1,540
14	Allair	390	130	3-14-32	"	109	2,633	429
15	Trilby	83	36	3-10-32	"	112	3,133	423
16	Trilby (colored)	35	12	"	5-31-32	50	2,772	1,008
17	J. P. Gorman Co.	*	56*	6-13-32	7-30-32	42	1,134	252
18	Wizard		13*	"	"	42	504	168
19	Indian Head		4*	"	"	42	1,176	252
20	Raccoon		13*	4-23-32	"	77	1,722	504
21	Apex		3*	4-13-32	"	54	165	252
22	Algoma Block		14*	"	7-2-32	18	252	882
23	Meems Haskins		21*	"	7-30-32	42	672	746
24	Crawford		16*	"	"	42	1,092	462
25	Liberty		26*	"	"	42		



PERRY COUNTY—Continued

No.	Schools	School Enrollment	Children on Relief in School	Started	Stopped	Relief Feeding Number Days Meals Served	Total Number Meals Served	Pre-School Children	Nursing and Expectant Mothers
26	Harveyton .....		10*	5-30-32	7-25-32	30	360	840	180
27	Perkins Bowling .....		40*	"	"	30	450	840	840
28	Wisconsin .....		65*	"	7-16-32	42	1,650		
29	Heiner .....		125*	"	6-11-32	11	1,500		
30	Marlowe .....							468	252
31	Buchanan .....							1,050	378
32	Howard Co. ....							2,058	
		3,298	1,701				121,428	83,255	19,532

% school children on relief to school enrollment: 39.3%. \* Not included.  
Total meals served: 121,428.

Pre-school children receiving rations: 638.

Nursing and expectant mothers receiving rations: 115.

Total rations served to pre-school children, nursing and expectant mothers: 102,787.

HOPKINS COUNTY  
American Friends Service Committee—District No. 7

Rowland D. White, District Director

No.	Schools	School Enrollment	Children on Relief in School	Started	Stopped	Relief Feeding Number Days Meals Served	Total Number Meals Served
1	St. Charles (white).....	164	50	1- 4-32	3-18-32	60	4,795
2	St. Charles (colored)...	51	15	1-12-32	"	45	1,128
3	Barnsley .....	72	30	1- 4-32	4-29-32	85	2,550
4	Carbondale .....	*	25	1- 5-32	5-13-32	95	1,982
5	White City .....	*	35	1-19-32	3-16-32	48	1,681
6	Earlington (white) .....	400	125	12-14-31	5-13-32	100	11,800
7	Earlington (colored) .....	347	80	1-25-32	5- 7-32	70	5,217
8	Earlington (Parochial) ..	32	12	2-19-32	5-13-32	60	659
9	Grapevine .....	175	40	12-16-31	4-26-32	85	4,189
10	Isley (white) .....	160	75	12-17-31	4-20-32	83	5,185
11	Isley (colored) .....	20	13	12-18-31	3-18-32	56	752
12	Madisonville (colored) ..	470	80	2-15-32	5-20-32	70	5,615
13	Midway (colored) .....	26	15	1-19-32	4-29-32	75	1,107
14	Morton's Gap .....	120	120	1-23-32	5-20-32	85	789
15	Morton's Gap (colored) ..	44	16	1-27-32	3-18-32	38	608
16	Nortonville .....	220	78	12-28-31	4-29-32	85	5,297
17	Nortonville (colored) ..	41	16	1-28-32	3-18-32	32	484
18	Daniel Boone .....	79	47	1- 4-32	3-18-32	55	2,397
19	Oak Hill .....	65	25	1-19-32	5-13-32	85	2,125
20	Richland .....	96	30	12-28-32	3-11-32	50	1,388
21	New Salem .....	59	16	1-11-32	2-10-32	23	368
		2,641	943				60,116

% school children to school enrollment: 34.2%. \* Not included.

Total meals served: 60,116.

Total rations served to pre-school children, nursing and expectant mothers: None.

MUHLENBERG COUNTY  
American Friends Service Committee—District No. 7

Rowland D. White, District Director

No.	Schools	School Enrollment	Children on Relief in School	Started	Stopped	Relief Feeding Number Days Meals Served	Total Number Meals Served	Pre-School Children	Nursing and Expectant Mothers
1	Graham (white)	637	75	2-1-32	5-18-32	75	4,752	201	
2	Graham (colored)	*	68	12-29-31	2-18-32	24	224		
3	Hillside	68	26	12-17-31	5-13-32	90	2,025		
4	Brownsville	118	54	1-4-32	5-14-32	96	4,335		
5	Midland	155	32	1-6-32	4-30-32	68	1,868	491	
6	Bever Cleaton	460	172	1-7-32	5-20-32	91	4,856	1,621	
7	Drakesboro (white)	385	105	12-15-31	5-14-32	85	7,367	597	
8	Drakesboro (colored)	70	68	1-11-32	"	95	5,878	124	
9	Martwick	140	58	1-20-32	4-22-32	65	3,349	262	
10	Prospect	*	27	1-20-32	5-14-32	83	1,785		
11	Hughes Kirk	*	70	1-18-32	"	83	5,483		
12	Hazel Creek	63	45	1-8-32	5-21-32	76	2,565		
13	S. Carrollton	104	59	1-26-32	5-20-32	83	4,607	70	
14	Beech Creek	147	35	1-4-32	5-14-32	95	4,439	110	
15	Powderley (white)	172	88	12-14-31	1-29-32	23	1,854	526	
16	Powderley (colored)	53	12	12-30-31	2-19-32	35	321		
17	Depoy	56	40	1-4-32	1-22-32	25	783		
18	Moorehead	173	75	12-28-31	1-22-32	20	1,349		
19	Lucerne (colored)	15	4	1-4-32	2-19-32	20	45		
20	Elk Valley	57	30	1-13-32	2-27-32	40	789		
21	Browder (colored)	91	32	1-4-32	1-22-32	15	462		
22	Mogs	*							
		2,664	1,175				59,126	4,002	

% school children on relief to school enrollment: 37.9%. \* Not included.  
Total meals served: 59,126.  
Pre-school children receiving rations: 317. Total rations served to pre-school children, nursing and expectant mothers: 4,002.

McLEAN COUNTY  
American Friends Service Committee—District No. 7

Rowland D. White, District Director

No.	Schools	School Enrollment	Children on Relief in School	Started	Stopped	Relief Feeding Number Days Meals Served	Total Number Meals Served
1	Island	190	95	1-29-32	3-5-32	21	1,911

% school children on relief to school enrollment: 50%.  
Total meals served: 1,911.  
Total rations served to pre-school children, nursing and expectant mothers: None.

UNION COUNTY  
American Friends Service Committee—District No. 7

Rowland D. White, District Director

No.	Schools	School Enrollment	Children on Relief in School	Started	Stopped	Relief Feeding Number Days Meals Served	Total Number Meals Served
1	Curlew	*	55	3-27-32	5-20-32	45	2,333
2	De Haven	160	125	"	"	40	4,176
		160	180				6,509

% school children on relief to school enrollment: 7.1%. \* Not included.  
Total meals served: 6,509.  
Total rations served to pre-school children, nursing and expectant mothers: None.

WEBSTER COUNTY  
 American Friends Service Committee—District No. 7  
 Rowland D. White, District Director

No.	Schools	School Enrollment	Children on Relief in School	Relief Feeding		Total Number Meals Served
				Started	Stopped	
1	Providence (white) . . . . .	610	120	1-19-32	5-20-32	90
2	Providence (colored) . . . . .	290	72	1-25-32	"	129
3	Wheatcroft . . . . .	150	110	2-19-32	5-13-32	70
4	Clay . . . . .	*	150	1-19-32	5-20-32	90
		<u>1,050</u>	<u>452</u>			<u>35,460</u>

% school children on relief to school enrollment: 28%. \* Not included.  
 Total meals served: 35,460.  
 Total rations served to pre-school children, nursing and expectant mothers: None.

ILLINOIS

FRANKLIN COUNTY  
 American Friends Service Committee—District No. 8

Wilfred V. Jones, District Director

No.	Schools	School Enrollment	Children on Relief in School	Started	Stopped	Relief Feeding		Nursing and Expectant Mothers	
						Number Days Meals Served	Total Number Meals Served		
<b>BENTON</b>									
1	Douglas . . . . .	405	50	1- 4-32	4-15-32	70	3,500		
2	Grant . . . . .	390	35	"	"	70	2,338		
3	Webster . . . . .	591	35	"	"	70	2,441		
4	Lincoln . . . . .	300	25	"	"	70	1,962		
5	Washington . . . . .	270	22	"	"	70	1,520		
<b>CHRISTOPHER</b>									
6	Jefferson . . . . .	102	35	1-18-32	4-22-32	65	2,144		
7	Franklin . . . . .	325	51	"	"	65	3,230		
8	Washington . . . . .	263	33	"	"	65	1,876		
9	Logan . . . . .	170	70	"	"	65	4,578	432	
10	Sesser . . . . .	524	55	1- 5-32	4-15-32	70	3,737		
11	Coello . . . . .	150	50	3-26-32	4-22-32	18	890		
		<u>3,490</u>	<u>461</u>				<u>28,216</u>	<u>732</u>	<u>432</u>

% school children on relief to school enrollment: 13.2%. Pre-school children receiving rations: None.  
 Total meals served: 28,216. Nursing and expectant mothers receiving rations: 7.  
 Total rations served to pre-school children, nursing and expectant mothers: 1,164.